

**SWTC SEPC APPENDIX A7 – FLOODING –
LAND SE OF GRIFFIN PLACE**

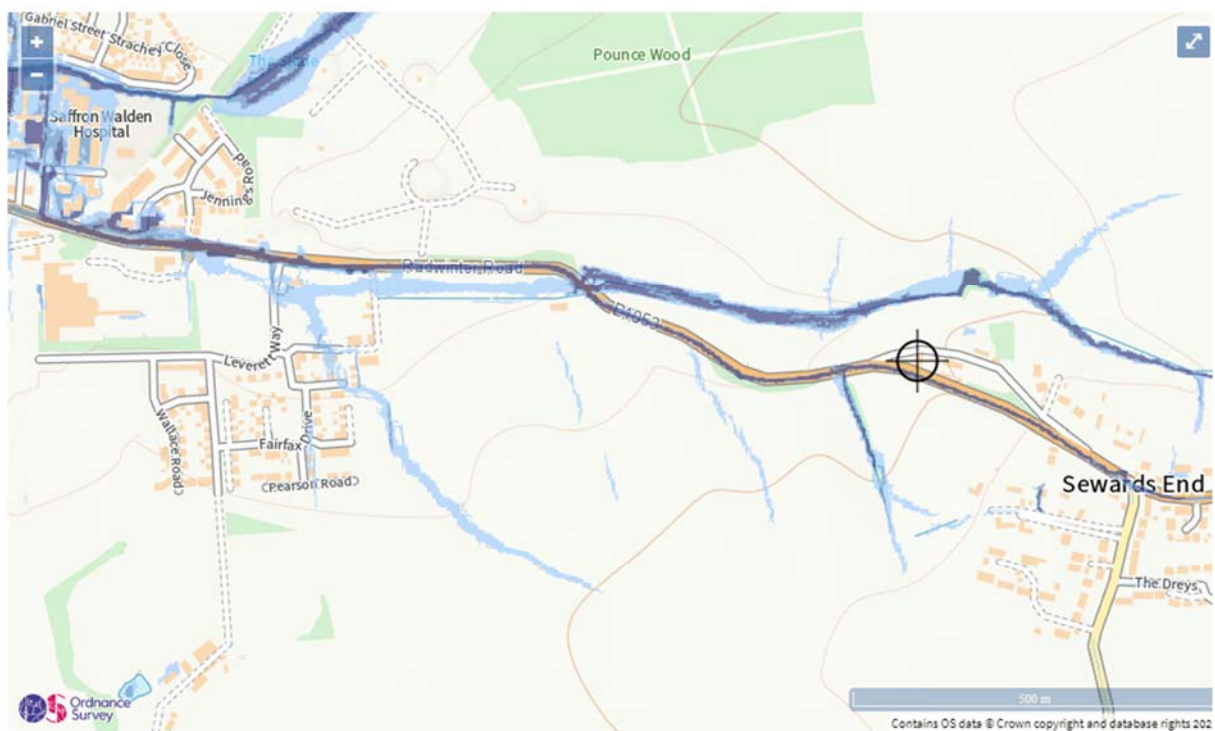
SWTC SEPC APPENDIX A7 – FLOODING

1 Flood Maps

SURFACE WATER MAPS – ENVIRONMENT AGENCY

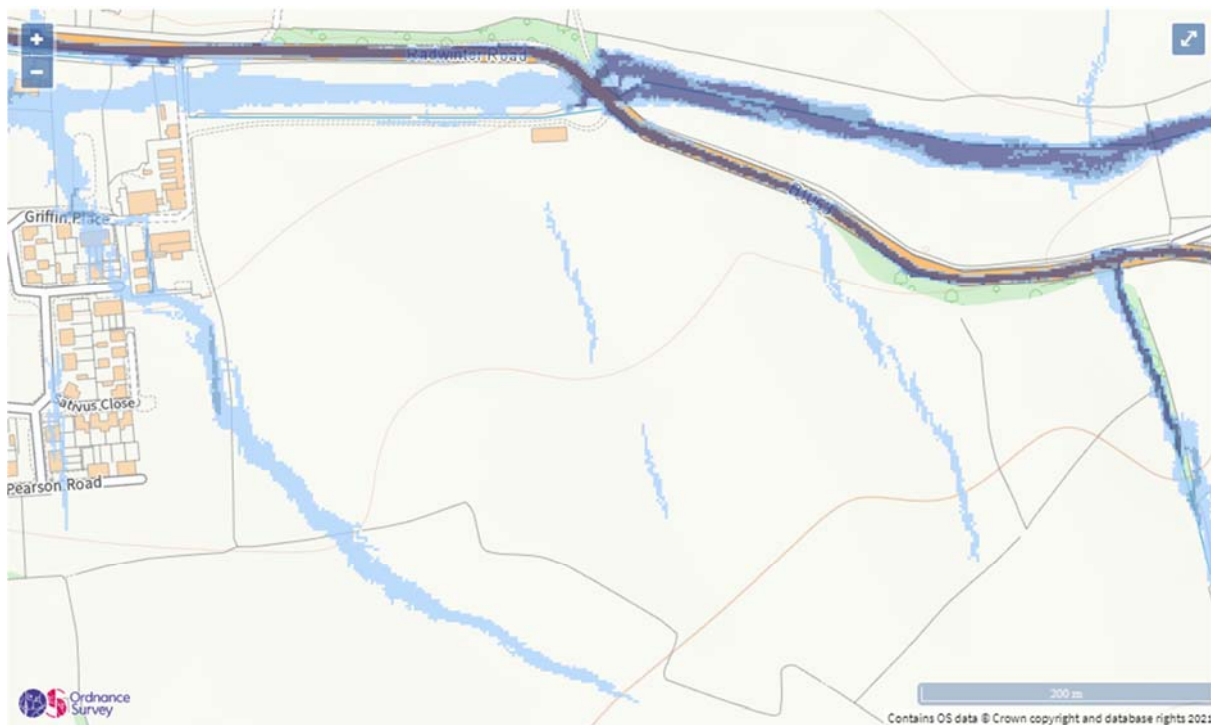


The flooding corresponds with the land contours down the site, and then across the entire frontage and access onto Radwinter Road.



Extent of flooding from surface water

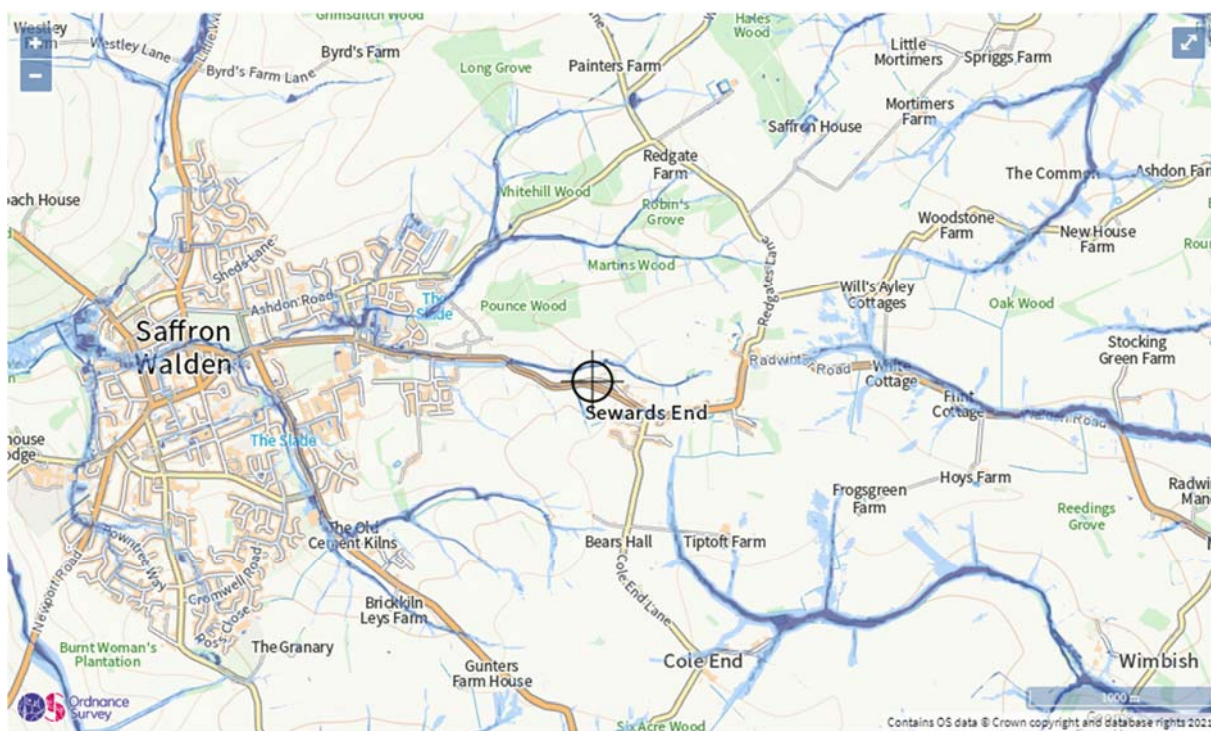
● High
 ● Medium
 ● Low
 ○ Very low
 ⊗ Location you selected



Extent of flooding from surface water

● High
 ● Medium
 ● Low
 ● Very low
 ⊕ Location you selected

This shows the water meadows alongside the stream (including at the frontage) have a valuable role in preventing the further flooding of Radwinter Road and the land downstream of the stream leading into Saffron Walden.



Extent of flooding from surface water

● High
 ● Medium
 ● Low
 ● Very low
 ⊕ Location you selected