

- KEY:**
- Site Boundary
 - Tree Numbers
 - Tree Canopies
 - Category 'U' Trees
 - Category 'A' RPA
 - Category 'B' RPA
 - Category 'C' RPA
 - Trees to be Removed
 - Tree Protection Barrier
 - Tree Protection Barrier (Secondary Specification)

Note: Trees 3-8, 28-31 and Groups G2-G4 & G8-G10 have been plotted using measurements onsite in conjunction with aerial imagery. Their locations were not recorded on the topographical survey of the site.

Note: The RPA footprint for Trees 1-10 have been displaced to allow for the effect of the adopted highway. The surface area of the RPA has not been reduced.



Cited from Google Earth

REV	DATE	NOTE	Drawn	Chk'd

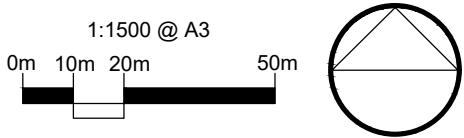
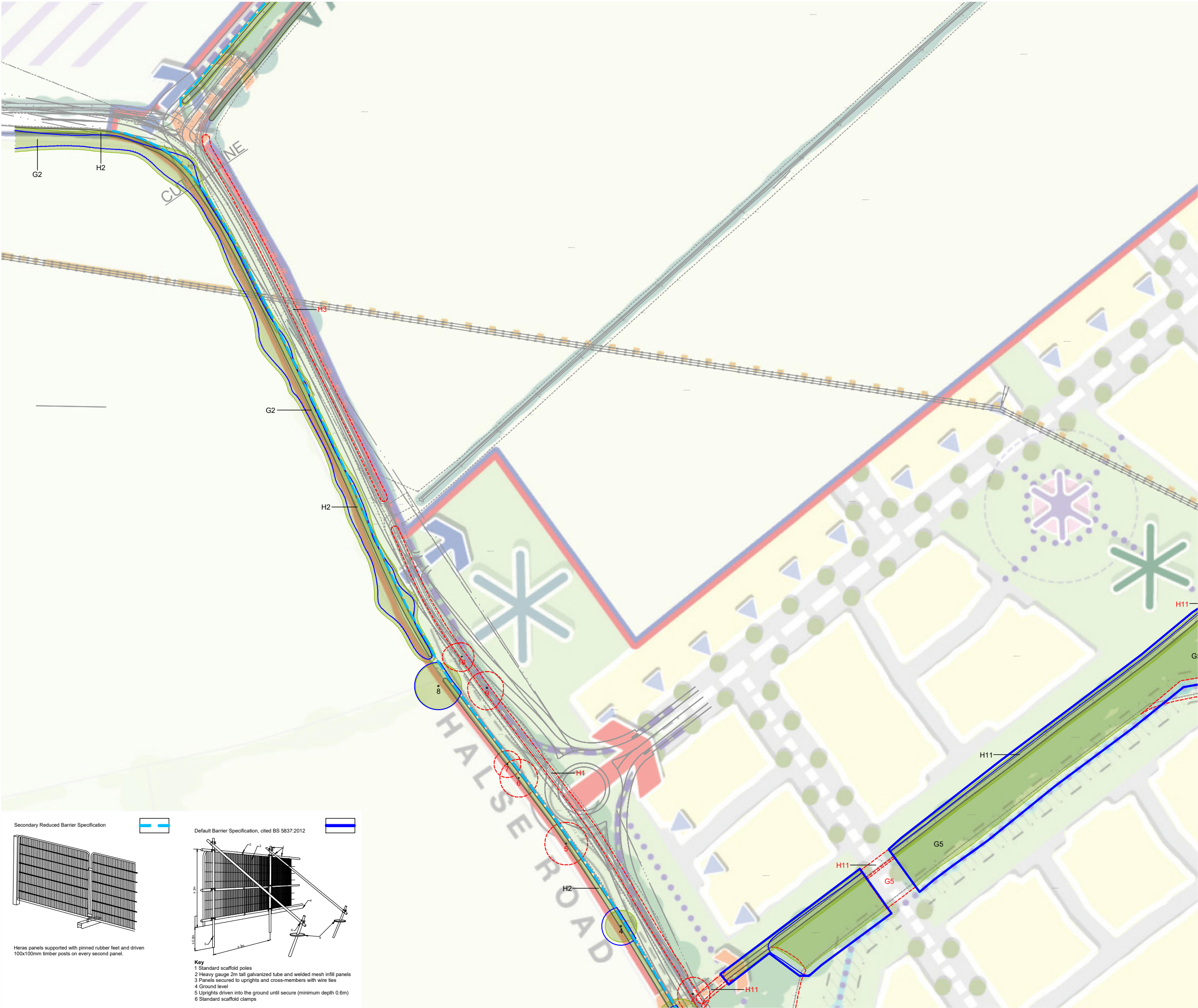
aspect arboriculture

TITLE
Land North West of Radstone Fields
Halse Road, Brackley
Tree Protection Plan

CLIENT
Mintondale Developments Ltd

SCALE 1:1500 @ A3	DATE NOV 2020	DRAWN GW
DRAWING NUMBER 10793 TPP 01 (1/4)	REVISION	

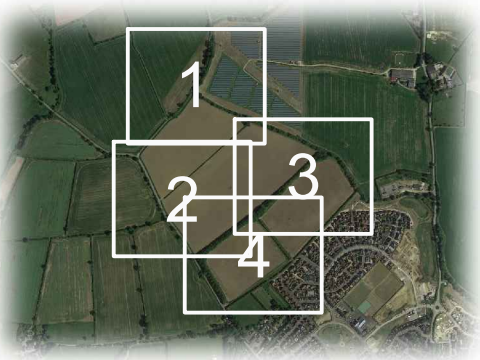
Based on: RFE - Masterplan LB01 Rev G.pdf



- KEY:
- Site Boundary
 - Tree Numbers
 - Tree Canopies
 - Category 'U' Trees
 - Category 'A' RPA
 - Category 'B' RPA
 - Category 'C' RPA
 - Trees to be Removed
 - Tree Protection Barrier
 - Tree Protection Barrier (Secondary Specification)

Note: Trees 3-8, 28-31 and Groups G2-G4 & G8-G10 have been plotted using measurements onsite in conjunction with aerial imagery. Their locations were not recorded on the topographical survey of the site.

Note: The RPA footprint for Trees 1-10 have been displaced to allow for the effect of the adopted highway. The surface area of the RPA has not been reduced.



Cited from Google Earth

REV	DATE	NOTE	Drawn	Chk'd
REVISIONS				

aspect arboriculture

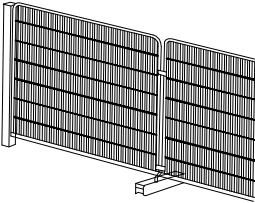
TITLE
Land North West of Radstone Fields
Halse Road, Brackley
Tree Protection Plan

CLIENT
Mintondale Developments Ltd

SCALE 1:1500 @ A3	DATE NOV 2020	DRAWN GW
DRAWING NUMBER 10793 TPP 01 (2/4)		REVISION

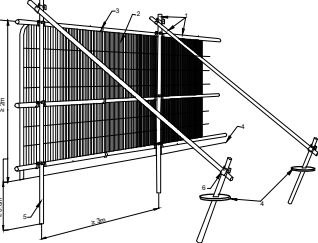
Based on: RFE - Masterplan LB01 Rev G.pdf

Secondary Reduced Barrier Specification

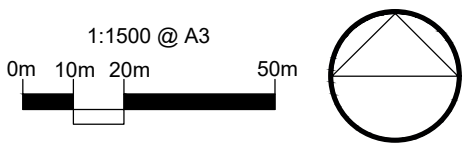
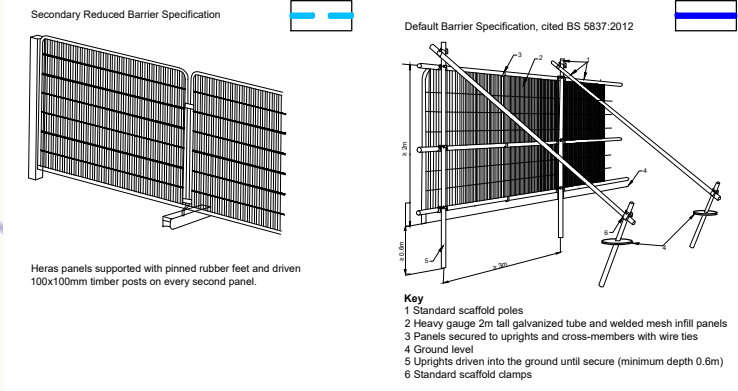


Heras panels supported with pinned rubber feet and driven 100x100mm timber posts on every second panel.

Default Barrier Specification, cited BS 5837:2012



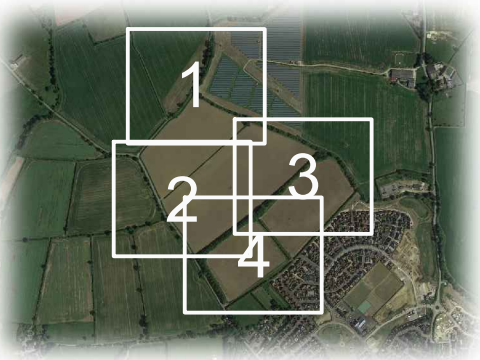
Key
1 Standard scaffold poles
2 Heavy gauge 2m tall galvanized tube and welded mesh infill panels
3 Panels secured to uprights and cross-members with wire ties
4 Ground level
5 Uprights driven into the ground until secure (minimum depth 0.6m)
6 Standard scaffold clamps



- KEY:
- Site Boundary
 - Tree Numbers
 - Tree Canopies
 - Category 'U' Trees
 - Category 'A' RPA
 - Category 'B' RPA
 - Category 'C' RPA
 - Trees to be Removed
 - Tree Protection Barrier
 - Tree Protection Barrier (Secondary Specification)

Note: Trees 3-8, 28-31 and Groups G2-G4 & G8-G10 have been plotted using measurements onsite in conjunction with aerial imagery. Their locations were not recorded on the topographical survey of the site.

Note: The RPA footprint for Trees 1-10 have been displaced to allow for the effect of the adopted highway. The surface area of the RPA has not been reduced.



Cited from Google Earth

REV	DATE	NOTE	Drawn	Chk'd

REVISIONS

aspect arboriculture

TITLE

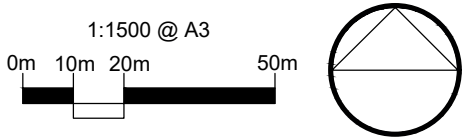
Land North West of Radstone Fields
Halse Road, Brackley
Tree Protection Plan

CLIENT

Mintondale Developments Ltd

SCALE 1:1500 @ A3	DATE NOV 2020	DRAWN GW
DRAWING NUMBER 10793 TPP 01 (3/4)	REVISION	

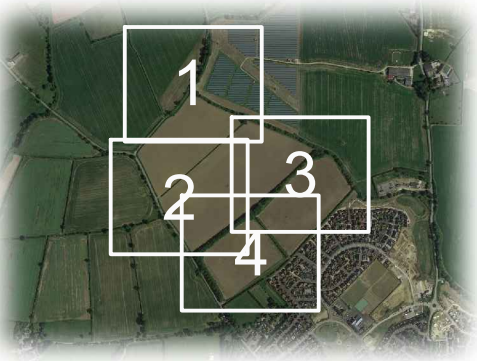
Based on: RFE - Masterplan LB01 Rev G.pdf



- KEY:
- Site Boundary
 - Tree Numbers
 - Tree Canopies
 - Category 'U' Trees
 - Category 'A' RPA
 - Category 'B' RPA
 - Category 'C' RPA
 - Trees to be Removed
 - Tree Protection Barrier
 - Tree Protection Barrier (Secondary Specification)

Note: Trees 3-8, 28-31 and Groups G2-G4 & G8-G10 have been plotted using measurements onsite in conjunction with aerial imagery. Their locations were not recorded on the topographical survey of the site.

Note: The RPA footprint for Trees 1-10 have been displaced to allow for the effect of the adopted highway. The surface area of the RPA has not been reduced.



Cited from Google Earth

REV	DATE	NOTE	Drawn	Chk'd
REVISIONS				

aspect arboriculture

TITLE
Land North West of Radstone Fields
Halse Road, Brackley
Tree Protection Plan

CLIENT
Mintondale Developments Ltd

SCALE 1:1500 @ A3	DATE NOV 2020	DRAWN GW
DRAWING NUMBER 10793 TPP 01 (4/4)		REVISION

Based on: RFE - Masterplan LB01 Rev G.pdf