



COTSWOLD  
TRANSPORT  
PLANNING

Mintondale Developments Ltd

Land off Halse Road, Brackley

Framework Residential Travel Plan

November 2020





## DOCUMENT REGISTER

<b>CLIENT:</b>	<b>MINTONDALE DEVELOPMENTS LTD</b>
<b>PROJECT:</b>	<b>LAND OFF HALSE ROAD, BRACKLEY</b>
<b>PROJECT CODE:</b>	<b>CTP-20-564</b>

<b>REPORT TITLE:</b>	<b>FRAMEWORK RESIDENTIAL TRAVEL PLAN</b>		
<b>PREPARED BY:</b>	<b>MARTIN WHITELOW</b>	<b>DATE:</b>	<b>NOVEMBER 2020</b>
<b>CHECKED BY:</b>	<b>JAMIE MATTOCK</b>	<b>DATE:</b>	<b>NOVEMBER 2020</b>
<b>APPROVED BY:</b>	<b>ADAM PADMORE</b>	<b>DATE:</b>	<b>NOVEMBER 2020</b>

<b>REPORT STATUS:</b>	<b>ISSUE 01</b>
-----------------------	-----------------

Prepared by **COTSWOLD** TRANSPORT PLANNING LTD

CTP House  
Knapp Road  
Cheltenham  
Gloucestershire  
GL50 3QQ

**Tel:** 01242 523696

**Email:** [cheltenham@cotswoldtp.co.uk](mailto:cheltenham@cotswoldtp.co.uk)

**Web:** [www.cotswoldtp.co.uk](http://www.cotswoldtp.co.uk)



## List of Contents

### Sections

1	Introduction .....	1
2	Travel Plan Context.....	4
3	Baseline Sustainability Audit .....	7
4	Travel Plan Objectives and Targets.....	13
5	Travel Plan Management and Measures .....	16
6	Travel Plan Action Plan .....	18
7	Monitoring and Review.....	22

### Appendices

APPENDIX A: Indicative Pedestrian and Cycling Isochronal Plans

APPENDIX B: Bus Stop Timetables

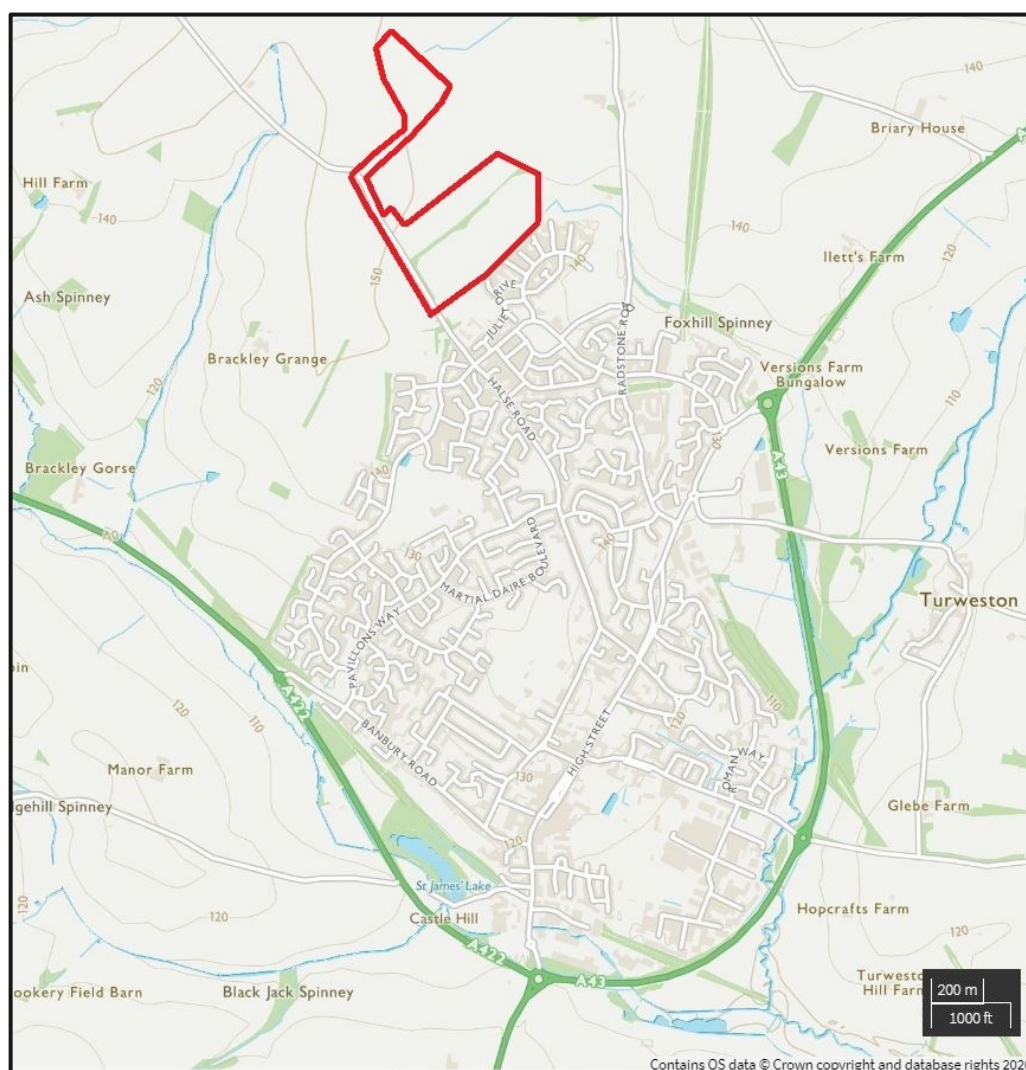
APPENDIX C: Example Travel Survey



# 1 Introduction

## Brief

- 1.1 Cotswold Transport Planning Ltd (CTP) has been commissioned by Mintondale Developments Ltd to produce a Framework Residential Travel Plan (F RTP) to support an Outline Planning Application with all matters reserved except access, for a proposed development of up to 450 dwellings on land off Halse Road, Brackley.
- 1.2 A TA has been prepared and submitted under a separate cover to assess the relevant highways and transportation analysis of this planning application.
- 1.3 The application site comprises land located to the east of Halse Road, and northwest of the Radstone Fields development, in Brackley. This land is shown indicatively on the site location plan at **Figure 1.1**.



**Figure 1.1 – Indicative Site Location Plan**

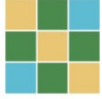


## Background

- 1.4 This FRTP sets out the initial principles and suggested management mechanisms for adoption in the final Residential Travel Plans (RTP's) to reduce the number of single-occupancy vehicle trips.
- 1.5 Due to the size of the application site it is anticipated that it shall be brought forward in a phased approach. On this basis each phase shall produce RTP's based on the principles and suggested management mechanisms set out in this FRTP.
- 1.6 This FRTP expands on the recommended best practice measures for improving accessibility and reducing the dominance of the private car.
- 1.7 It is important to note that this is not a static document developed to address a transport problem at a single point in time. TP's are a rolling programme of solutions that will continue to evolve and operate successfully in the long term.
- 1.8 The Outline Planning Application is with all matters reserved except for access, however it is anticipated that the site shall provide a permeable network of overlooked and well-lit pedestrian and cycle routes, to encourage walking and cycling.
- 1.9 Vehicular access to the site will be via two separate accesses off Halse Road and an access via an extension of Miranda Lane. These accesses shall also be accompanied by footway / cycleway access. In addition, a dedicated footway / cycleway access shall be provided off Halse Road and to Radstone Fields country park in the north-east corner of the site.

## Aims and Scope of the Travel Plan

- 1.10 The main aims of this FRTP are:
  - i) To increase the use of public transport;
  - ii) To increase walking and cycling;
  - iii) To minimise the impact of the development on the local area and transport infrastructure; and
  - iv) To achieve a high awareness of the FRTP.
- 1.5 The structure of the remainder of the FRTP is as follows:
  - i) **Travel Plan Context:** sets the scene and details the policy context;
  - ii) **Baseline Sustainability Audit:** details opportunities for residents to travel by sustainable travel modes (i.e. non-car modes);



- iii) **Travel Plan Objectives and Targets:** indicates basic objectives the Travel Plan should aim to achieve and targets to be considered during the monitoring period;
- iv) **Travel Plan Management and Measures:** sets out the structure for managing the Travel Plan, and the measures that will be used to achieve the objectives and targets;
- v) **Travel Plan Action Plan:** a detailed list of measures, responsibilities and costs;
- vi) **Monitoring and Review:** provides a schedule for monitoring the success of the RTP.



## 2 Travel Plan Context

### Introduction

- 2.1 A Travel Plan (TP) is a long-term management strategy built on a package of site-specific measures that seeks to deliver sustainable transport objectives with an emphasis on reducing reliance on single occupancy car journeys and facilitating travel by sustainable modes which is articulated in a document that is regularly reviewed.
- 2.2 To be successful, it is crucial that the TP be a dynamic process that grows and develops with time. The RTP will need to be flexible to allow for changes to be made in line with the performance of the plan, changing circumstances of the site and environment in which it works and to tailor it to the needs of future residents and visitors of the site.

### Benefits of a Travel Plan

- 2.3 TP's help to reduce the cost of travel for individuals and reduce the impact of travel on the local highway network as well as the environment. They also help to:
- i) Inform the design and operation of the development;
  - ii) Improve the health of all users on-site through promoting walking and cycling measures;
  - iii) Create improvements for public transport, pedestrians and cyclists;
  - iv) Reduce reliance on the car through facilitating and promoting sustainable transport initiatives;
  - v) Reduce the cost of travelling to and from the site through promotion of car sharing or alternative travel modes;
  - vi) Reduce congestion by minimising car use, thereby reducing local noise pollution and harmful vehicle emissions such as carbon monoxide; and
  - vii) Save energy through the reduced use of fossil fuels.
- 2.4 The TP process is best illustrated by the travel plan pyramid, as set out in **Figure 2.1** which is taken from Department for Transport (DfT) guidance.



**Figure 2.1: The Travel Plan Pyramid**

- 2.5 This FRTP has been designed in order to ensure that the five tiers of the travel plan pyramid are reflected in the desired outcomes. The tiers are satisfied as follows:
- i) The local accessibility of the site meets the bottom tier of the pyramid as it is accessible by walking and cycling and is located near facilities and amenities;
  - ii) The existence of existing pedestrian infrastructure and provision of cycle parking at the development meet the second tier of the pyramid;
  - iii) This FRTP sets out the roles and responsibilities of the Travel Plan Co-ordinator (TPC), which satisfies the third tier;
  - iv) The provision of nearby amenities for residents and public transport links, including bus, satisfy the fourth tier; and
  - v) The developer will raise awareness of the plan to residents, as required by the fifth and final tier of the pyramid.

### National Policy

- 2.6 In developing this FRTP, care has been taken to ensure that full regard has been given to best UK practice methods and these have been applied. Key policy documents (national, regional and local) have been taken into account to help deliver the maximum possible uptake of sustainable transport modes.
- 2.7 The National Planning Policy Framework (February 2019) sets out the principal objective under Section 9: Promoting Sustainable Transport, which is to ensure that development applications commit to the following:
- i) *'Give priority first to pedestrians and cycle movements;*





- ii) Address the needs of people with disabilities and reduced mobility in relation to all modes of transport;*
- iii) Create places that are safe, secure and attractive;*
- iv) Allow for the effective delivery of goods, and access by service and emergency vehicles; and*
- v) Be designed to enable charging of plug-in and other ultra-low emission vehicles in safe, accessible and convenient locations.'*

- 2.8 The DfT has produced guidance on the successful implementation of TP's. The guidance 'Good Practice Guidelines: Delivering Travel Plans Through the Planning Process' provides detailed advice on all aspects of preparing a residential Travel Plan through an in-depth review of a number of case studies of specific residential schemes.
- 2.9 The application site has good existing walking, cycling and public transport links, the use of which will be further enhanced by the development of this FRTP.
- 2.10 Significant research has been undertaken by DfT on the impacts of travel planning and smart choice measures on reducing the number of car trips made. This FRTP includes measures which have been proven to maximise returns in terms of car trip reductions.

### **Local Policy**

- 2.11 NCC follow the advice as set out in the DfT 'Good Practice Guidelines: Delivering Travel Plans Through the Planning Process'. NCC have set out a travel plan template in order to provide guidance in line with national guidance.



### 3 Baseline Sustainability Audit

- 3.1 When considering the overall sustainability of a site, with regards to highways it is important that a site can be demonstrated to be accessible for all potential residents without resulting in a heavy reliance on travel by car, particularly single occupancy journeys.
- 3.2 Within the local context of the site, this can be assessed against the proximity to local services and amenities, which residents and/or visitors may require access to on a day-to-day basis. Equally, it can be assessed based on the access to sustainable (non-car) transport modes, which provide alternative options for travelling to any services or amenities located further afield from the site.

#### Walking and Cycling

##### Walking

- 3.1 Paragraph 4.4.1 of Manual for Streets (MfS) states that walkable neighbourhood are typically characterised as having a range of facilities within 10 minutes walking distance (around 800 metres). However, it states that this is not an upper limit and that walking offers the greatest potential to replace short car trips, particularly those under 2km.
- 3.2 The Institute of Highways and Transport (IHT) guidance document 'Providing for Journeys on Foot' (published 2000) suggests an acceptable walking distance of 1km and a preferred maximum walking distance of 2km for commuting and educational purposes.
- 3.3 This is supported by the 2019 National Travel Survey (NTS) which found that 80% of trips under 1mile (1.6km) are undertaken on foot.

##### Cycling

- 3.4 The Local Transport Note (LTN) 1/20: Cycle Infrastructure Design, produced by the DfT, states the following at paragraph 2.2.2:
- 'Two out of every three personal trips are less than five miles in length – an achievable distance to cycle for most people.'*
- 3.5 It is therefore considered, and substantiated by DfT findings, that facilities and amenities within five miles, or 8km, of the application site are considered within acceptable cycling distance.



- 3.6 All of the facilities and amenities are within an acceptable cycling distance. This provides reasonable opportunities for people to commute or access further facilities in those areas by bicycle.
- 3.7 For reference, indicative pedestrian and cycling isochronal plans have been produced and are appended to this report at **Appendix F**.

### Public Transport Accessibility

#### Local Bus Services

- 3.8 The nearest bus stops in relation to the development site are the 'Juno Crescent' located on Poppyfields Way to the east of the junction with Juno Crescent. The bus stops are located approximately 350m, measured from the centre of the site. A bus stop is provided on the northern and southern side of Poppyfields Crescent. The bus stops currently comprise a flag with timetable information and hardstanding due to the presence of the grass verge segregating the carriageway from the footway.
- 3.9 A summary of the bus services and frequencies from the 'Juno Crescent' bus stops are provided in **Table 3.1** with the bus timetables provided at **Appendix G**.

No.	Operator	Route	Days	First Service	Frequency	Last Service
500	Stagecoach	Banbury – Chacombe – Middleton Cheney – Brackley	Monday – Friday	07:13	Approximately Every 20 – 30 Minutes	23:07
			Saturday	07:34	Approximately Every 30 Minutes	23:07
			Sunday	08:41	Approximately Every Hour	18:40
		Brackley – Middleton Cheney – Chacombe – Banbury	Monday – Friday	06:26	Approximately Every 20 – 30 Minutes	23:07
			Saturday	07:34	Approximately Every 30 Minutes	23:07
			Sunday	07:35	Approximately Every Hour	17:41

**Table 3.1: Bus Services and Frequencies**

Note: Information taken from [www.stagecoachbus.com/timetables](http://www.stagecoachbus.com/timetables) October 2020



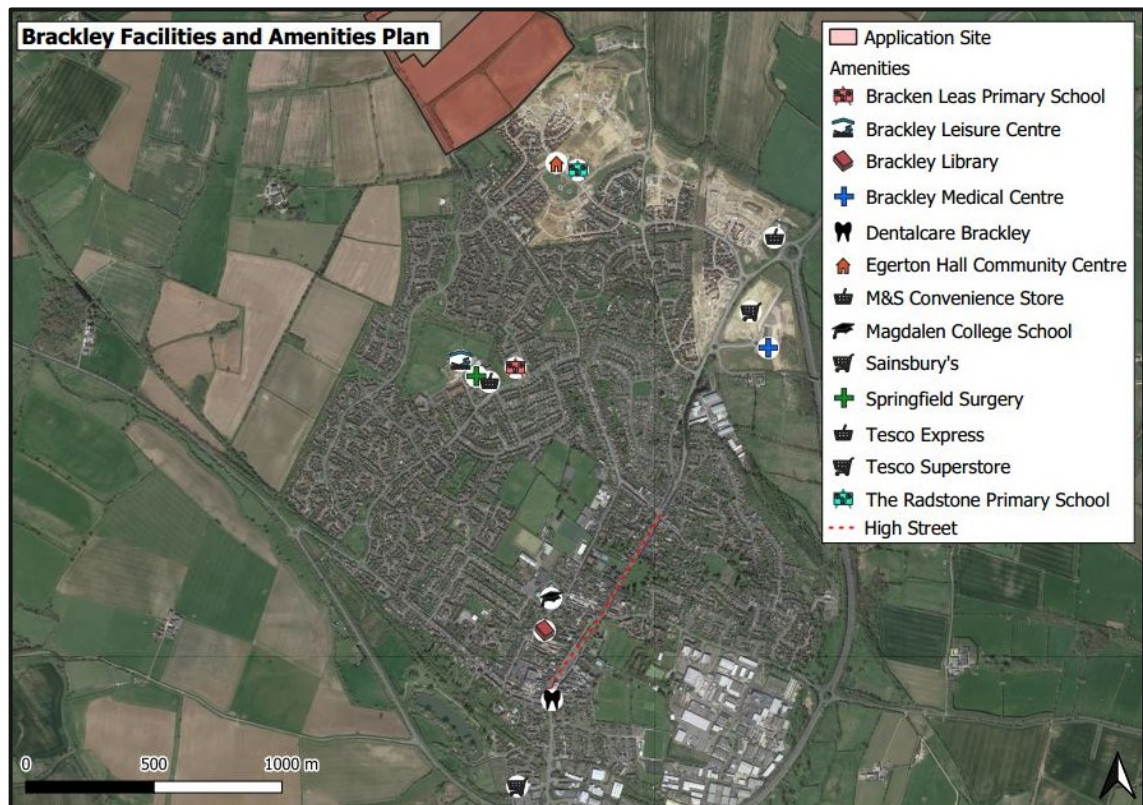
- 3.10 The No.500 service from the 'Juno Crescent' bus stops provide regular services throughout the weekdays and weekend between Brackley and Banbury. The service from the 'Juno Crescent' bus stops to Brackley market place and Banbury town centre takes approximately 10 minutes and 45 minutes respectively.
- 3.11 It is considered that the bus services provide a good level of public transport with regular services available to access services and facilities as well as commuting capabilities.
- 3.12 It should be noted that due to the COVID-19 pandemic the bus timetables may have been affected and may have a future impact on bus service frequency.
- 3.13 **Table 3.1** indicates that the application site is served by local buses throughout the week and on weekends. It is therefore considered that future residents will be able to utilise public transport throughout the day to access local services and amenities within Brackley. During peak hour site visits, it is considered that the principle bus services have spare capacity in order to accommodate the public transport users generated by the development.
- 3.14 The site is also located in close proximity to Brackley town centre, where there is access to wide-ranging weekday and weekend services, at the main bus interchange off High Street, throughout Northamptonshire and adjoining counties including Coventry, Northampton, Milton Keynes and Oxford, as well as national services to London, Birmingham and Bristol.

#### *Rail Service*

- 3.15 Brackley currently does not benefit from having a railway station, however, the nearest railway station identified to Brackley is located at Banbury, approximately 13km west of the application site.
- 3.16 The No.500 bus provides a service between Brackley and Banbury, and therefore a connection to a railway service can be made from the application site.

#### **Proximity to Local Services and Amenities**

- 3.17 As part of the review of the availability of local services, an assessment has been undertaken of the services and facilities which will be generally required by residents on a day-to-day basis.
- 3.18 The services and amenities identified as part of this assessment have been annotated onto **Figure 3.1** (local services and amenities plan) below.



**Figure 3.1: Local Services and Amenities**

3.19 In summary, the following local services and facilities are present within an acceptable walking or cycling distance of the application site:

- i) Radstone Primary School;
- ii) Egerton Hall – Community Centre;
- iii) Bracken Leas Primary School;
- iv) New Brackley Medical Centre (Due to Open 16<sup>th</sup> November 2020);
- v) Springfield Surgery;
- vi) M & S Convenience Store;
- vii) Tesco Express Convenience Store;
- viii) Brackley Leisure Centre;
- ix) Brackley Library;
- x) Magdalen College School;
- xi) Dentist;
- xii) Brackley High Street; and
- xiii) Tesco Superstore
- xiv) New Sainsbury's Superstore (Due to Open Winter 2020).



- 3.20 The Institution of Highways and Transportation (IHT) publication (in 2000), 'Guidelines for Providing Journeys on Foot', suggest the following acceptable walking distances to services and amenities (for pedestrians without mobility impairment), as shown in **Table 3.2**.

	Town Centres	Commuting/School	Other Destinations
<b>Desirable</b>	200m	500m	400m
<b>Acceptable</b>	400m	1000m	800m
<b>Preferred Maximum</b>	800m	2000m	1200m

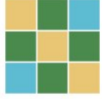
**Table 3.2: Suggested Walking Distances**

- 3.21 **Table 3.2** demonstrates the local services and facilities that are available within an acceptable walking and cycling distance. The time it takes to walk to a service or amenity is based on guidance contained within the IHT guidelines which states that an average walking speed is approximately 1.4m/s. Also contained within **Table 3.3** are the cycle times to each of the destinations, which is based on the lower limit of 4m/s, as set out in Local Transport Note 2/08: Cycle Infrastructure Design.

Service / Amenity	Approximate Distance (m)	Travel Time Walking (minutes)	Travel Time Cycling (minutes)
Radstone Primary School	400m	5 minutes	2 minutes
Egerton Hall – Community Centre	400m	5 minutes	2 minutes
Bracken Leas Primary School	1400m	17 minutes	6 minutes
New Brackley Medical Centre (Due to Open 16 <sup>th</sup> November 2020)	1750m	21 minutes	7 minutes
New Sainsbury's Superstore (Due to Open Winter 2020)	1750m	21 minutes	7 minutes
Springfield Surgery	1900m	22 minutes	8 minutes
M & S Convenience Store	1900m	22 minutes	8 minutes
Tesco Express Convenience Store	1900m	22 minutes	8 minutes
Brackley Leisure Centre	1900m	22 minutes	8 minutes
Brackley Library	2400m	28 minutes	10 minutes
Magdalen College School	2400m	28 minutes	10 minutes
Dentist – Dentalcare Brackley	2800m	33 minutes	12 minutes
Brackley High Street (Between junction Halse Road – Bridge Street)	2000m-2800m	24-33 minutes	8-12 minutes
Tesco Superstore	3300m	39 minutes	14 minutes

**Table 3.3: Proximity to Services and Amenities**

- 3.22 **Table 3.3** confirms that a range of services and amenities fall within suggested the IHT walking distances from the development site and are therefore considered highly and easily accessible by walking (and cycling).



- 3.23 It should be noted that the IHT guidelines are suggested distances, and not an upper limit of walking distances to facilities and amenities, as explored in greater detail within this section.
- 3.24 In addition to these local services and amenities, Brackley town centre is an approximate 2km distance (approximately 24 minutes walking and 8 minutes cycling) from the site (also accessible by public transport).
- 3.25 These destinations provide access to a range of additional facilities and amenities including education, employment, retail and leisure offerings.

### Summary

- 3.26 CTP considers the site to be sustainably located with safe and convenient access to a wide range of services and amenities, supported by suitable pedestrian and cycle linkages between the application site and these facilities and local bus stops, providing bus travel to local and regional destinations including the train station at Banbury.





## 4 Travel Plan Objectives and Targets

### Objectives

- 4.1 It is important that the FRTP has a focus and direction in what it is trying to achieve. This can be accomplished through the identification of FRTP objectives, which are realistic and site specific.
- 4.2 It is essential that there is an agreed set of objectives which can be adopted and thereby influence all actions arising from the FRTP. The following objectives are informed by best practice guidance but also reflect local circumstances and stakeholder requirements.
- 4.3 Four main, specific FRTP objectives are listed for this FRTP:
- i) To achieve a high awareness of the sustainable travel options available amongst residents and visitors, which is to be maintained during the build-up of the site. It is vitally important that the users of the development are made fully aware of the sustainable transport choices available to them from the opening of the site so that sustainable travel habits are established from the outset;
  - ii) To increase the health of all users of the site by increasing the proportion of active travel (i.e. walking and cycling). Current Government advice for living a healthier lifestyle is to engage in moderate exercise (that raises your breathing and heart rate) for 30 minutes a day;
  - iii) To encourage less reliance on the car, wherever practical, particularly for single occupancy car journeys. The measures set out in this Travel Plan not only encourage and facilitate pedestrian and cycle use, but also make better use of the car through initiatives such as car sharing; and
  - iv) Engage residents in critical thinking regarding their travel choices.

### Targets

- 4.4 The FRTP will need to be monitored to ensure it is still relevant, up-to-date and having an effect on sustainable travel use on the site.
- 4.5 Monitoring of the TP will be the responsibility of the TPC. The TPC will supply NCC with updated statistical data showing how residents travel to and from the site, along with details of the measures employed to encourage sustainable travel.





- 4.6 A baseline travel survey will be undertaken within three months of first occupation to determine existing travel patterns of residents.
- 4.7 Surveys will then be undertaken in years 1, 3 and 5 to ascertain modal splits and determine if the targets and objectives of this RTP are being met. An example travel survey has been provided at **Appendix C**.
- 4.8 Targets for the scale of modal shift against which the success of the RTP can be measured need to be SMART (Specific, Measurable, Achievable, Realistic, and Timed).
- 4.9 Accurate modal split targets will be identified once the baseline travel survey has been undertaken. Initial modal split targets have been set based on Census 2011 travel to work data for the South Northamptonshire 009 output area.
- 4.10 NCC's Travel Plan Guide for travel plans sets out that all new site developments must commit to a minimum reduction of 20% in single occupancy car journeys.
- 4.11 On this basis, **Table 4.1** sets out initial modal split targets based on a 20% reduction in single occupancy car journeys.

Mode of Travel	Census Modal Split	Modal Split Year 5 Target
Bus	0.6%	1.3%
Car Driver	85.6%	68.5%
Car Passenger	3.0%	6.5%
Bicycle	1.2%	2.6%
Pedestrian	9.6%	21.1%
<b>Total</b>	<b>100%</b>	<b>100%</b>

**Table 4.1: Percentage Modal Shift Targets**

*\*Subject to rounding*

### Forecast Trip Generation

- 4.12 To provide context to the number of trips the reduction will equate to, a summary of the forecast vehicle trip generation is provided in **Table 4.2**, as identified in the TA.

Time	Arrivals	Departures	Total
AM Peak (08:00 - 09:00)	74	233	307
PM Peak (17:00 - 18:00)	175	88	263

**Table 4.2: Forecast Vehicle Trip Generation**



- 4.13 A 20% reduction in single occupancy car use would equate to 245 and 211 two-way vehicle trips in the AM and PM peak hours respectively, a reduction of 62 and 52 vehicle trips on the adjacent highway network in the peak AM and PM hours. It should be noted, however, that not all trips identified in **Table 4.2** will be undertaken by single occupants.



## 5 Travel Plan Management and Measures

### Travel Plan Co-ordinator

- 5.1 The F RTP will be managed and monitored by a TPC who will work to deliver the content of this F RTP and ensure the measures are carried out effectively.
- 5.2 The roles of the TPC will include:
- i) Marketing and promoting the RTP;
  - ii) Providing sustainable travel information to residents;
  - iii) Liaising with the council, transport operators and specialist groups where necessary;
  - iv) Arranging and undertaking of resident travel surveys; and
  - v) Providing monitoring updates to NCC.

### Marketing and Promotion

- 5.3 Marketing and promotion of the RTP and sustainable travel opportunities and benefits will be the responsibility of the developer. The sales process will incorporate the RTP and make potential residents aware of the commitment to sustainable travel at the development from the outset.
- 5.4 On occupation, residents will be provided with a Travel Information Pack (TIP), which will provide them with information set out in this RTP.

### Travel Plan Measures

#### *Travel Information Pack*

- 5.5 A TIP will be provided on first occupation for each dwelling. The TIP will include various travel information, which will identify means of sustainable travel for residents. Specifically, the TIP will contain the following:
- i) A local facilities map, including public rights of way;
  - ii) Information on nearby bus stops and bus routes;
  - iii) Information on car sharing initiatives;
  - iv) Links to relevant sustainable travel apps;
  - v) Details of local cycle stores; and
  - vi) Information on marketing and promotional events.



### *Walking and Cycling Measures*

- 5.6 The internal site will accommodate suitable footways on each side of the carriageway to facilitate pedestrian movements.
- 5.7 Details of walking and cycling routes will be included as part of the TIP for new residents, and they will be made aware of walking and cycling initiatives they can get involved with, such as [livingstreets.org.uk](http://livingstreets.org.uk) and [sustrans.org.uk](http://sustrans.org.uk).
- 5.8 In addition, residents will be encouraged to take up cycle to work schemes, provided they are made available to them by their employers.
- 5.9 Secure and covered cycle parking will be provided at each dwelling in the development.

### *Public Transport Measures*

- 5.10 Public transport timetables will be provided to residents in the form of the TIP.
- 5.11 A bus map will also be produced demonstrating the location of nearby bus stops and the services that operate from them.

### *Car Measures*

- 5.12 Residents will be made aware of car sharing websites such as [liftshare.com](http://liftshare.com) and [blablacar.co.uk](http://blablacar.co.uk), which allow drivers and commuters to share their journeys with others travelling in similar directions.



## 6 Travel Plan Action Plan

- 6.1 Key to the success of the RTP is the identification of viable transport alternatives and these can be identified through the TP Action Plan. This is the package of site-specific measures that will encourage a shift away from single occupancy car use and increase accessibility to and from the site.

### Action Plan

- 6.2 A comprehensive set of initiatives and measures is set out on the following pages. The recommended residential measures have been drawn from best practice, TP guidance and case studies throughout the UK.
- 6.3 The Action Plan has been broken down into three main strategy sections relating to the scope of the RTP, which are, walking and cycling, public transport, and RTP support measures. The measures and initiatives identified in this aim to directly influence residents of the site, furthermore, some of the measures could also have an influence on visitor trips to the site and where this is the case, this has been identified in each strategy section.
- 6.4 Measures contained within the Action Plan also indicate a timeframe and forecast costs.



## Walking and Cycling Strategy

	Measure	Action	Residents	Visitors	Timeframe	Cost
WC1	<b>Walking and Cycling Route Maps to Facilities</b>	Comprehensive walking and cycling route maps will be available in the TIP	✓	✓	Included in TIP	Designer's time and printing costs
WC2	<b>Promotion of Local Cycle Shops</b>	Information on cycle shops / hire / repair in the TIP and online	✓		Included in TIP	Designer's time and printing costs
WC3	<b>Promotion of Walking and Cycling Events / Websites</b>	Promotion of events such as 'Walk to Work Week' and websites such as <a href="http://livingstreets.org.uk">livingstreets.org.uk</a> and <a href="http://sustrans.org.uk">sustrans.org.uk</a>	✓		Included in TIP	Designer's time and printing costs
WC4	<b>Promote Cycle to Work Schemes</b>	Residents may be unaware of cycle to work schemes in operation at their place of employment. Those with access to these schemes should be encouraged to utilise them, and those without should speak with their manager to get them implemented	✓		Included in TIP	Designer's time and printing costs
WC5	<b>Encourage Formation of Walking / Running / Cycling Groups</b>	Encourage residents to form groups to partake in outdoor activities to improve public health and wellbeing	✓		Included in TIP	Designer's time and printing costs



## Public Transport Strategy

	Measure	Action	Residents	Visitors	Timeframe	Cost
PT1	Explore additional Bus Provision	As part of the development the developer / TPC shall explore the provision of additional bus service provision.	✓	✓	Prior to first occupation	Developers / TPC's time
PT2	Promotion of Bus Services	Up to date bus information to be provided to residents and visitors in the TIP	✓	✓	Included in TIP	Designer's time and printing costs
PT3	Promotion of Travel Apps	Public transport apps will be promoted as part of personalised journey planning in the TIP and on the website	✓		Included in TIP	Designer's time and printing costs



### Travel Plan Support Measures

	Measure	Action	Residents	Visitors	Timeframe	Cost
TP1	TIP	A TIP is to be created and distributed to residents on first occupation of each dwelling	✓		Following approval of the Travel Plan	Designer's time and printing costs
TP2	Promotion of Local Delivery Services	Promote delivery services for grocery shopping, those unable to walk or cycle to the local Tesco could benefit from deliveries	✓		Included in TIP	Designer's time and printing costs
TP3	Promotion of Local Taxi Companies	Taxi companies will be promoted in the TIP	✓	✓	Included in TIP	Designer's time and printing costs
TP4	Promotion of car sharing websites	Provide information on car sharing websites for residents to make use of	✓		Included in TIP	Designer's time and printing costs





## 7 Monitoring and Review

### Travel Plan Monitoring and Review Schedule

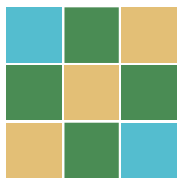
- 7.1 The monitoring of the TP is important in order to understand if the proposed objectives and modal split targets have been met. Travel surveys will be undertaken in years 1, 3 and 5. The surveys will help the TPC make budget decisions and review targets and objectives.
- 7.2 Following the completion of each survey, a summary report will be prepared and provided to NCC within one month of the data being made available.

### Implementation Plan

- 7.3 An implementation plan sets out the commitments and timescales required to effectively implement the TP. This includes timescales to appoint a TPC, deliver proposed measures, commission surveys for monitoring and a schedule for the effective monitoring and review of the RTP.
- 7.4 The implementation plan covers the lifetime of the RTP, which is five years from full occupation.
- 7.5 **Table 7.1** sets out the implementation plan for the proposed residential development. The plan indicates which measures and actions are required prior to first occupation and during the construction of the development.

Task	Details	Proposed Timescale for Implementation
Appointment of TPC	Responsible for promoting and marketing the TP and implementing measures.	On the commencement of works on site
Travel Plan Action Plan	Implement all measures as set out in the Action Plan.	As per the timescales set out in the Travel Plan Action Plan
Surveys and Monitoring	Travel surveys will be undertaken to determine the travel patterns of residents / visitors on the site, which will influence any amendments or refinements to be made to the Travel Plan.	Years 1, 3 and 5 following baseline survey within three months of first occupation
Review of RTP Performance	Following completion of the surveys, the TPC will be required to provide a review report to NCC	Within one month of the data being made available

**Table 7.1: Implementation Plan**



# COTSWOLD TRANSPORT PLANNING

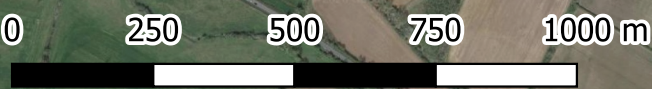
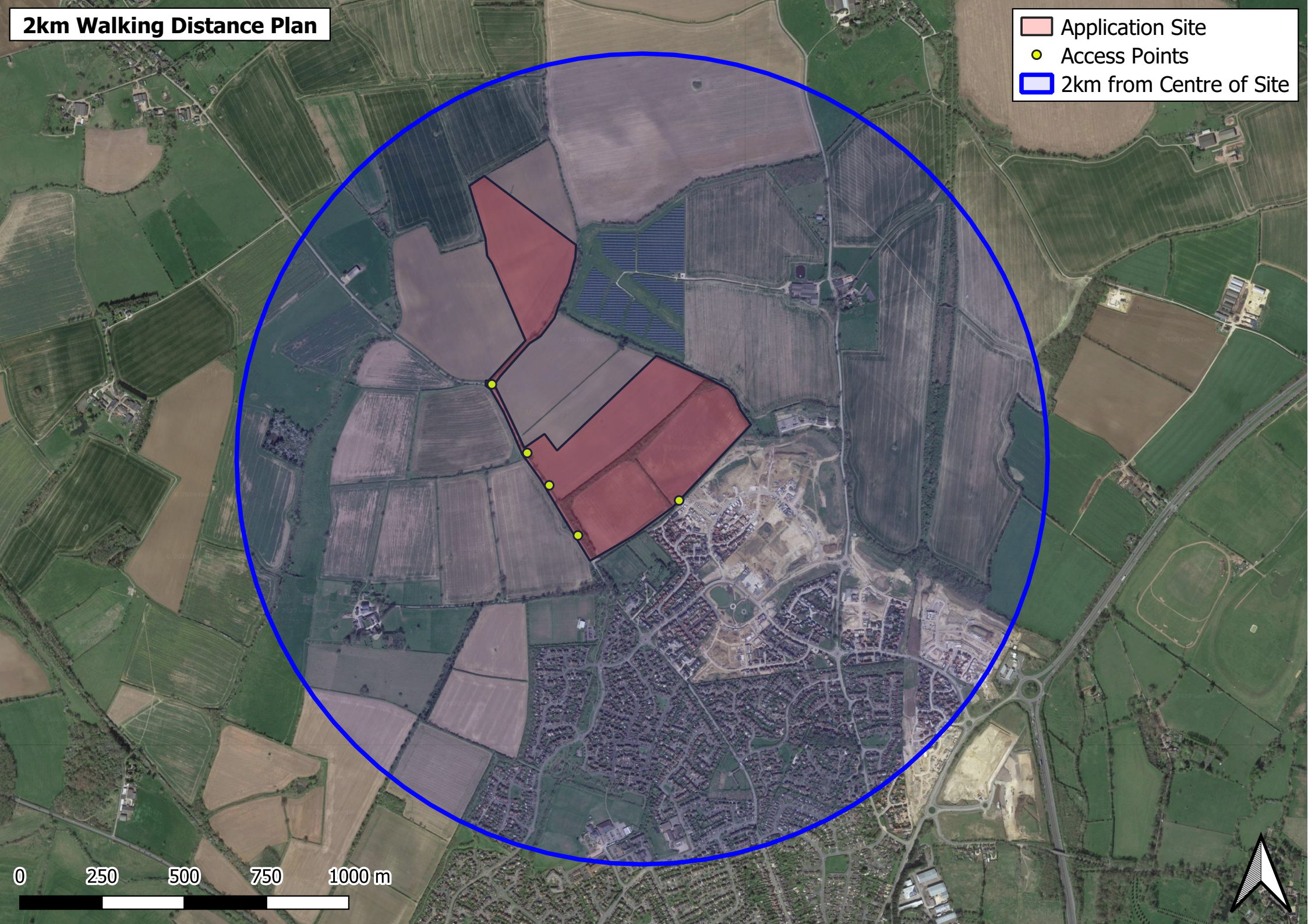
## Appendix A

Indicative Pedestrian and Cycling  
Isochronal Plans



# 2km Walking Distance Plan

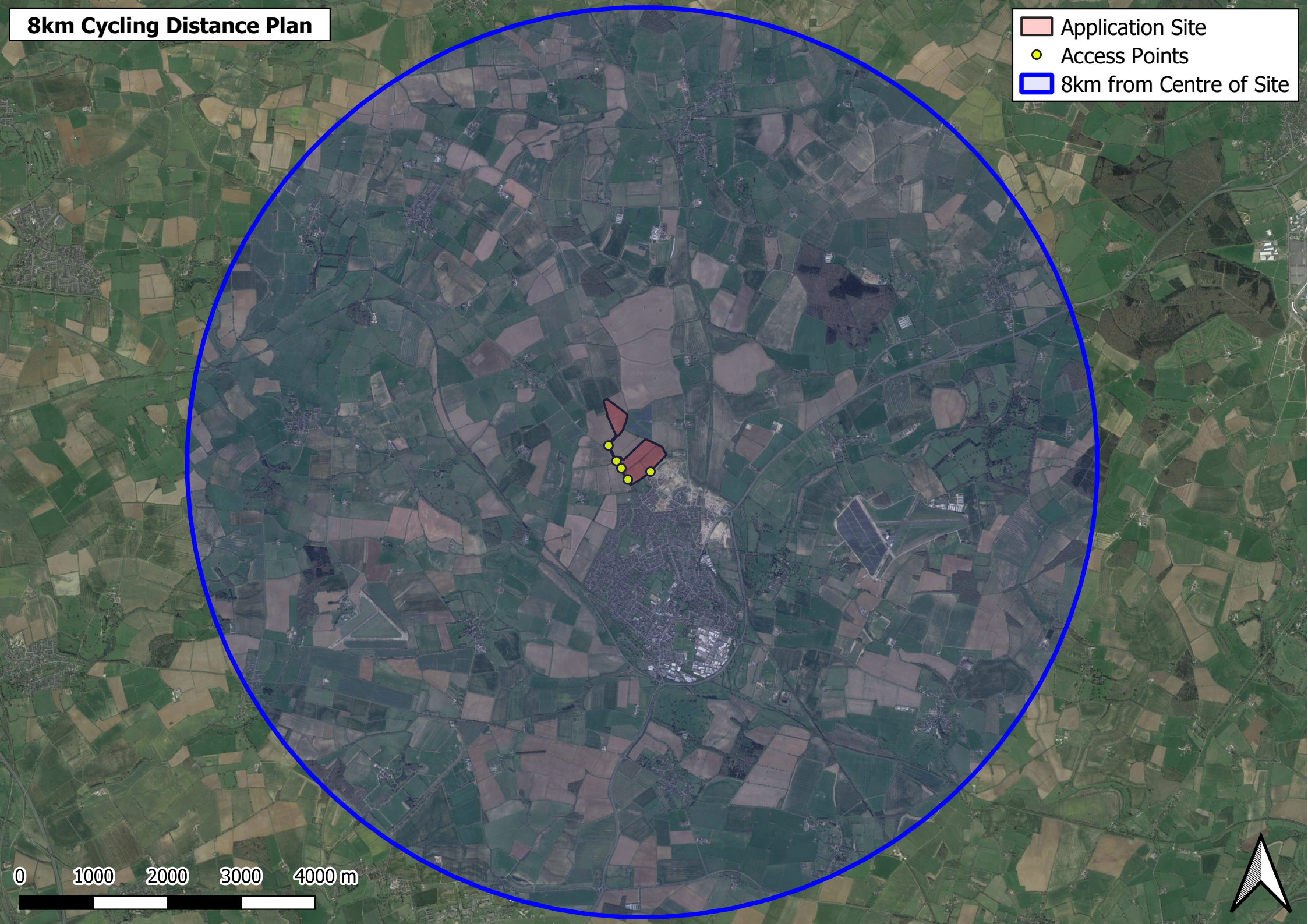
- Application Site
- Access Points
- 2km from Centre of Site





# 8km Cycling Distance Plan

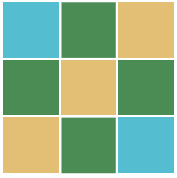
- Application Site
- Access Points
- 8km from Centre of Site



0 1000 2000 3000 4000 m







COTSWOLD  
TRANSPORT  
PLANNING

## Appendix B

Bus Timetables

**500****Banbury - (Chacombe) - Middleton Cheney - Brackley**

Stagecoach in Oxfordshire - Banbury - Brackley

Timetable valid from 12/10/2020 until further notice.

Direction of stops: where shown (eg: W-bound) this is the compass direction towards which the bus is pointing when it stops

**Mondays to Fridays**

<b>Banbury Town Centre, Bus Station (Bay 5)</b>	—	—	—	—	—	—	—	—	—	—	—	—	—	—	—	—	—	—
§ Banbury Town Centre, opp Calthorpe Street	—	—	—	—	—	—	—	—	—	—	—	—	—	—	—	—	—	—
§ Banbury, adj Dashwood Road	—	—	—	—	—	—	—	—	—	—	—	—	—	—	—	—	—	—
<b>Calthorpe, o/s Horton Hospital</b>	—	—	—	—	—	—	—	—	—	—	—	—	—	—	—	—	—	—
§ Calthorpe, opp Hightown Gardens for Hospital	—	—	—	—	—	—	—	—	—	—	—	—	—	—	—	—	—	—
§ Calthorpe, opp Western Crescent	—	—	—	—	—	—	—	—	—	—	—	—	—	—	—	—	—	—
§ Calthorpe, Morrisons (entrance)	—	—	—	—	—	—	—	—	—	—	—	—	—	—	—	—	—	—
<b>Banbury Town Centre, Bus Station (Bay 5)</b>	<b>0630</b>	<b>0655</b>	<b>0715</b>	<b>0735</b>	<b>0810</b>	<b>0840</b>	<b>0900</b>	<b>0920</b>	<b>0940</b>	<b>1010</b>	<b>1030</b>	<b>1100</b>	<b>1130</b>	<b>1200</b>	<b>1230</b>	<b>1300</b>	<b>1330</b>	<b>1400</b>
§ Grimsbury, o/s Co-op	0631	0656	0716	0736	0811	0840	0901	0921	0940	1011	1030	1101	1130	1201	1230	1301	1330	1401
§ Grimsbury, o/s Tesco	<b>arr</b> 0631	0656	0716	0736	0812	0841	0902	0922	0941	1012	1031	1102	1131	1202	1231	1302	1331	1402
§ Grimsbury, o/s Tesco	<b>dep</b> 0631	0657	0717	0736	0812	0841	0902	0922	0941	1012	1031	1102	1131	1202	1231	1302	1331	1402
§ Grimsbury, opp Priory Vale Road	0632	0658	0718	0737	0813	0842	0903	0923	0942	1013	1032	1103	1132	1203	1232	1303	1332	1403
§ Grimsbury, opp Stroud Park	0633	0700	0720	0738	0814	0842	0904	0924	0942	1014	1032	1104	1132	1204	1232	1304	1332	1404
<b>Banbury, in Gateway Retail Park</b>	<b>0635</b>	<b>0708</b>	<b>0728</b>	<b>0740</b>														
§ Chacombe, Banbury Road (Outside 12)	0639			0744		0849			0949		1039		1139		1239		1339	
<b>Chacombe, adj Middleton Road</b>	<b>0640</b>			<b>0745</b>		<b>0850</b>			<b>0950</b>		<b>1040</b>		<b>1140</b>		<b>1240</b>		<b>1340</b>	
§ Middleton Cheney, Banbury Lane Crossroads (SE-bound)	0644	0709	0729	0749	0822	0854	0912	0932	0954	1022	1044	1112	1144	1212	1244	1312	1344	1412
§ Middleton Cheney, nr Stanwell Drive	0645	0709	0729	0750	0823	0855	0913	0933	0955	1023	1045	1113	1145	1213	1245	1313	1345	1413
§ Middleton Cheney, opp Rectory Lane	0646	0710	0730	0751	0824	0856	0914	0934	0956	1024	1046	1114	1146	1214	1246	1314	1346	1414
<b>Middleton Cheney, opp Red Lion</b>	<b>0647</b>	<b>0710</b>	<b>0730</b>	<b>0752</b>	<b>0825</b>	<b>0857</b>	<b>0915</b>	<b>0935</b>	<b>0957</b>	<b>1025</b>	<b>1047</b>	<b>1115</b>	<b>1147</b>	<b>1215</b>	<b>1247</b>	<b>1315</b>	<b>1347</b>	<b>1415</b>
§ Middleton Cheney, o/s Library	0647	0710	0730	0752	0825	0857	0915	0935	0957	1025	1047	1115	1147	1215	1247	1315	1347	1415
§ Middleton Cheney, adj The Green	0647	0711	0731	0752	0825	0857	0915	0935	0957	1025	1047	1115	1147	1215	1247	1315	1347	1415
§ Middleton Cheney, opp New Inn	0648	0711	0731	0753	0826	0858	0916	0936	0958	1026	1048	1116	1148	1216	1248	1316	1348	1416
§ Middleton Cheney, opp Washie Drive	0648	0716	0736	0753	0826	0858	0916	0936	0958	1026	1048	1116	1148	1216	1248	1316	1348	1416
<b>Farthinghoe, o/s St Michael's Church</b>	<b>0653</b>	<b>0725</b>	<b>0745</b>	<b>0758</b>	<b>0831</b>	<b>0903</b>	<b>0921</b>	<b>0941</b>	<b>1003</b>	<b>1031</b>	<b>1053</b>	<b>1121</b>	<b>1153</b>	<b>1221</b>	<b>1253</b>	<b>1321</b>	<b>1353</b>	<b>1421</b>
§ Brackley, opp Farthinghoe Close	0702	0725	0745	0807	0840	0912	0930	0950	1012	1040	1102	1130	1202	1230	1302	1330	1402	1430
§ Brackley, adj Westhill Avenue	0702	0726	0746	0807	0840	0912	0930	0950	1012	1040	1102	1130	1202	1230	1302	1330	1402	1430
§ Brackley, adj Manor Road	0703	0726	0746	0808	0841	0913	0931	0951	1013	1041	1103	1131	1203	1231	1303	1331	1403	1431
§ Brackley, opp Southfield Primary School	0703	0727	0747	0808	0841	0913	0931	0951	1013	1041	1103	1131	1203	1231	1303	1331	1403	1431
<b>Brackley, opp Market Place</b>	<b>0704</b>	<b>0727</b>	<b>0747</b>	<b>0809</b>	<b>0842</b>	<b>0914</b>	<b>0932</b>	<b>0952</b>	<b>1014</b>	<b>1042</b>	<b>1104</b>	<b>1132</b>	<b>1204</b>	<b>1232</b>	<b>1304</b>	<b>1332</b>	<b>1404</b>	<b>1432</b>
§ Brackley, o/s Winchester House	—	—	—	—	—	—	—	—	—	—	—	—	—	—	—	—	—	—
§ Brackley, opp Jarvis Court	—	—	—	—	—	—	—	—	—	—	—	—	—	—	—	—	—	—
§ Brackley, opp Top Station Road	—	—	—	—	—	—	—	—	—	—	—	—	—	—	—	—	—	—
§ Brackley, Northampton Road (N-bound)	—	—	—	—	—	—	—	—	—	—	—	—	—	—	—	—	—	—
<b>Brackley, opp Jutland Drive</b>	—	—	—	—	—	—	—	—	—	—	—	—	—	—	—	—	—	—
§ Brackley, opp Juno Crescent	—	—	—	—	—	—	—	—	—	—	—	—	—	—	—	—	—	—
§ Brackley, opp Local Centre	—	—	—	—	—	—	—	—	—	—	—	—	—	—	—	—	—	—
§ Brackley, adj Sycamore Close	—	—	—	—	—	—	—	—	—	—	—	—	—	—	—	—	—	—
§ Brackley, opp Cemetery Entrance	—	—	—	—	—	—	—	—	—	—	—	—	—	—	—	—	—	—
§ Brackley, adj Ellesmere Crescent	—	—	—	—	—	—	—	—	—	—	—	—	—	—	—	—	—	—
§ Brackley, nr Ellesmere Avenue	—	—	—	—	—	—	—	—	—	—	—	—	—	—	—	—	—	—
§ Brackley, adj Top Station Road	—	—	—	—	—	—	—	—	—	—	—	—	—	—	—	—	—	—
§ Brackley, adj Valley Road	—	—	—	—	—	—	—	—	—	—	—	—	—	—	—	—	—	—
§ Brackley, adj Church Road	—	—	—	—	—	—	—	—	—	—	—	—	—	—	—	—	—	—
<b>Brackley, adj Market Place</b>	—	—	—	—	—	—	—	—	—	—	—	—	—	—	—	—	—	—

**Notes:** § - Time at this stop is indicative. You are advised to be at any stop several minutes before the times shown

**500****Banbury - (Chacombe) - Middleton Cheney - Brackley**

Stagecoach in Oxfordshire - Banbury - Brackley

Timetable valid from 12/10/2020 until further notice.

Direction of stops: where shown (eg: W-bound) this is the compass direction towards which the bus is pointing when it stops

**Mondays to Fridays**

<b>Banbury Town Centre, Bus Station (Bay 5)</b>	—	—	—	—	—	—	—	—	—	—	—	—	—	—	—	2010	2110	—
§ Banbury Town Centre, opp Calthorpe Street	—	—	—	—	—	—	—	—	—	—	—	—	—	—	—	2015	2115	—
§ Banbury, adj Dashwood Road	—	—	—	—	—	—	—	—	—	—	—	—	—	—	—	2017	2117	—
<b>Calthorpe, o/s Horton Hospital</b>	—	—	—	—	—	—	—	—	—	—	—	—	—	—	—	2020	2120	—
§ Calthorpe, opp Hightown Gardens for Hospital	—	—	—	—	—	—	—	—	—	—	—	—	—	—	—	2022	2122	—
§ Calthorpe, opp Western Crescent	—	—	—	—	—	—	—	—	—	—	—	—	—	—	—	2024	2124	—
§ Calthorpe, Morrisons (entrance)	—	—	—	—	—	—	—	—	—	—	—	—	—	—	—	2026	2126	—
<b>Banbury Town Centre, Bus Station (Bay 5)</b>	<b>1430</b>	<b>1500</b>	<b>1520</b>	<b>1540</b>	<b>1610</b>	<b>1640</b>	<b>1700</b>	<b>1720</b>	<b>1745</b>	<b>1810</b>	<b>1840</b>	<b>1930</b>	<b>2030</b>	<b>2130</b>	<b>2230</b>			
§ Grimsbury, o/s Co-op	1430	1501	1521	1540	1611	1641	1700	1721	1745	1811	1840	1930	2031	2131	2231			
§ Grimsbury, o/s Tesco	<b>arr</b> 1431	1502	1522	1541	1612	1642	1701	1722	1746	1812	1841	1931	2031	2131	2232			
§ Grimsbury, o/s Tesco	<b>dep</b> 1431	1502	1522	1541	1612	1642	1701	1722	1746	1812	1841	1931	2031	2131	2232			
§ Grimsbury, opp Priory Vale Road	1432	1503	1523	1542	1613	1643	1702	1723	1747	1813	1842	1932	2032	2132	2232			
§ Grimsbury, opp Stroud Park	1432	1504	1524	1542	1614	1644	1702	1724	1747	1814	1842	1932	2033	2133	2233			
<b>Banbury, in Gateway Retail Park</b>																		
§ Chacombe, Banbury Road (Outside 12)	1439			1549			1709		1754		1849	1939						
<b>Chacombe, adj Middleton Road</b>	<b>1440</b>			<b>1550</b>			<b>1710</b>		<b>1755</b>		<b>1850</b>	<b>1940</b>						
§ Middleton Cheney, Banbury Lane Crossroads (SE-bound)	1444	1512	1532	1554	1622	1652	1714	1732	1759	1822	1854	1943	2041	2141	2241			
§ Middleton Cheney, nr Stanwell Drive	1445	1513	1533	1555	1623	1653	1715	1733	1800	1823	1855	1943	2041	2141	2241			
§ Middleton Cheney, opp Rectory Lane	1446	1514	1534	1556	1624	1654	1716	1734	1801	1824	1856	1944	2042	2142	2242			
<b>Middleton Cheney, opp Red Lion</b>	<b>1447</b>	<b>1515</b>	<b>1535</b>	<b>1557</b>	<b>1625</b>	<b>1655</b>	<b>1717</b>	<b>1735</b>	<b>1802</b>	<b>1825</b>	<b>1857</b>	<b>1945</b>	<b>2043</b>	<b>2143</b>	<b>2243</b>			
§ Middleton Cheney, o/s Library	1447	1515	1535	1557	1625	1655	1717	1735	1802	1825	1857	1945	2043	2143	2243			
§ Middleton Cheney, adj The Green	1447	1515	1535	1557	1625	1655	1717	1735	1802	1825	1857	1945	2043	2143	2243			
§ Middleton Cheney, opp New Inn	1448	1516	1536	1558	1626	1656	1718	1736	1803	1826	1858	1946	2044	2144	2244			
§ Middleton Cheney, opp Washie Drive	1448	1516	1536	1558	1626	1656	1718	1736	1803	1826	1858	1946	2044	2144	2244			
<b>Farthinghoe, o/s St Michael's Church</b>	<b>1453</b>	<b>1521</b>	<b>1541</b>	<b>1603</b>	<b>1631</b>	<b>1701</b>	<b>1723</b>	<b>1741</b>	<b>1808</b>	<b>1831</b>	<b>1903</b>	<b>1950</b>	<b>2048</b>	<b>2148</b>	<b>2248</b>			
§ Brackley, opp Farthinghoe Close	1502	1530	1550	1612	1640	1710	1732	1750	1817	1840	1912	1958	2056	2156	2256			
§ Brackley, adj Westhill Avenue	1502	1530	1550	1612	1640	1710	1732	1750	1817	1840	1912	1958	2056	2156	2256			
§ Brackley, adj Manor Road	1503	1531	1551	1613	1641	1711	1733	1751	1818	1841	1913	1959	2057	2157	2257			
§ Brackley, opp Southfield Primary School	1503	1531	1551	1613	1641	1711	1733	1751	1818	1841	1913	1959	2057	2157	2257			
<b>Brackley, opp Market Place</b>	<b>1504</b>	<b>1532</b>	<b>1552</b>	<b>1614</b>	<b>1642</b>	<b>1712</b>	<b>1734</b>	<b>1752</b>	<b>1819</b>	<b>1842</b>	<b>1914</b>	<b>2000</b>	<b>2058</b>	<b>2158</b>	<b>2258</b>			
§ Brackley, o/s Winchester House	—	—	—	—	—	—	—	—	—	—	—	—	—	—	—			
§ Brackley, opp Jarvis Court	—	—	—	—	—	—	—	—	—	—	—	—	—	—	—			
§ Brackley, opp Top Station Road	—	—	—	—	—	—	—	—	—	—	—	—	—	—	—			
§ Brackley, Northampton Road (N-bound)	—	—	—	—	—	—	—	—	—	—	—	—	—	—	—			
<b>Brackley, opp Jutland Drive</b>	—	—	—	—	—	—	—	—	—	—	—	—	—	—	—			
§ Brackley, opp Juno Crescent	—	—	—	—	—	—	—	—	—	—	—	—	—	—	—			
§ Brackley, opp Local Centre	—	—	—	—	—	—	—	—	—	—	—	—	—	—	—			
§ Brackley, adj Sycamore Close	—	—	—	—	—	—	—	—	—	—	—	—	—	—	—			
§ Brackley, opp Cemetery Entrance	—	—	—	—	—	—	—	—	—	—	—	—	—	—	—			
§ Brackley, adj Ellesmere Crescent	—	—	—	—	—	—	—	—	—	—	—	—	—	—	—			
§ Brackley, nr Ellesmere Avenue	—	—	—	—	—	—	—	—	—	—	—	—	—	—	—			
§ Brackley, adj Top Station Road	—	—	—	—	—	—	—	—	—	—	—	—	—	—	—			
§ Brackley, adj Valley Road	—	—	—	—	—	—	—	—	—	—	—	—	—	—	—			
§ Brackley, adj Church Road	—	—	—	—	—	—	—	—	—	—	—	—	—	—	—			
<b>Brackley, adj Market Place</b>	—	—	—	—	—	—	—	—	—	—	—	—	—	—	—			

**Notes:** § - Time at this stop is indicative. You are advised to be at any stop several minutes before the times shown

**500****Banbury - (Chacombe) - Middleton Cheney - Brackley**

Stagecoach in Oxfordshire - Banbury - Brackley

Timetable valid from 12/10/2020 until further notice.

Direction of stops: where shown (eg: W-bound) this is the compass direction towards which the bus is pointing when it stops

**Saturdays**

<b>Banbury Town Centre, Bus Station (Bay 5)</b>	—	—	—	—	—	—	—	—	—	—	—	—	—	—	—	—	—	—	—
§ Banbury Town Centre, opp Calthorpe Street	—	—	—	—	—	—	—	—	—	—	—	—	—	—	—	—	—	—	—
§ Banbury, adj Dashwood Road	—	—	—	—	—	—	—	—	—	—	—	—	—	—	—	—	—	—	—
<b>Calthorpe, o/s Horton Hospital</b>	—	—	—	—	—	—	—	—	—	—	—	—	—	—	—	—	—	—	—
§ Calthorpe, opp Hightown Gardens for Hospital	—	—	—	—	—	—	—	—	—	—	—	—	—	—	—	—	—	—	—
§ Calthorpe, opp Western Crescent	—	—	—	—	—	—	—	—	—	—	—	—	—	—	—	—	—	—	—
§ Calthorpe, Morrisons (entrance)	—	—	—	—	—	—	—	—	—	—	—	—	—	—	—	—	—	—	—
<b>Banbury Town Centre, Bus Station (Bay 5)</b>	<b>0700</b>	<b>0800</b>	<b>0830</b>	<b>0900</b>	<b>0930</b>	<b>1000</b>	<b>1030</b>	<b>1100</b>	<b>1130</b>	<b>1200</b>	<b>1230</b>	<b>1300</b>	<b>1330</b>	<b>1400</b>	<b>1430</b>	<b>1500</b>	<b>1530</b>	<b>1600</b>	
§ Grimsbury, o/s Co-op	0701	0801	0830	0901	0930	1001	1030	1101	1130	1201	1230	1301	1330	1401	1430	1501	1530	1601	
§ Grimsbury, o/s Tesco	<b>arr</b> 0701	0802	0831	0902	0931	1002	1031	1102	1131	1202	1231	1302	1331	1402	1431	1502	1531	1602	
§ Grimsbury, o/s Tesco	<b>dep</b> 0701	0802	0831	0902	0931	1002	1031	1102	1131	1202	1231	1302	1331	1402	1431	1502	1531	1602	
§ Grimsbury, opp Priory Vale Road	0702	0803	0832	0903	0932	1003	1032	1103	1132	1203	1232	1303	1332	1403	1432	1503	1532	1603	
§ Grimsbury, opp Stroud Park	0703	0804	0832	0904	0932	1004	1032	1104	1132	1204	1232	1304	1332	1404	1432	1504	1532	1604	
<b>Banbury, in Gateway Retail Park</b>	<b>0705</b>																		
§ Chacombe, Banbury Road (Outside 12)	0709		0839		0939		1039		1139		1239		1339		1439		1539		
<b>Chacombe, adj Middleton Road</b>	<b>0710</b>		<b>0840</b>		<b>0940</b>		<b>1040</b>		<b>1140</b>		<b>1240</b>		<b>1340</b>		<b>1440</b>		<b>1540</b>		
§ Middleton Cheney, Banbury Lane Crossroads (SE-bound)	0714	0812	0844	0912	0944	1012	1044	1112	1144	1212	1244	1312	1344	1412	1444	1512	1544	1612	
§ Middleton Cheney, nr Stanwell Drive	0715	0813	0845	0913	0945	1013	1045	1113	1145	1213	1245	1313	1345	1413	1445	1513	1545	1613	
§ Middleton Cheney, opp Rectory Lane	0716	0814	0846	0914	0946	1014	1046	1114	1146	1214	1246	1314	1346	1414	1446	1514	1546	1614	
<b>Middleton Cheney, opp Red Lion</b>	<b>0717</b>	<b>0815</b>	<b>0847</b>	<b>0915</b>	<b>0947</b>	<b>1015</b>	<b>1047</b>	<b>1115</b>	<b>1147</b>	<b>1215</b>	<b>1247</b>	<b>1315</b>	<b>1347</b>	<b>1415</b>	<b>1447</b>	<b>1515</b>	<b>1547</b>	<b>1615</b>	
§ Middleton Cheney, o/s Library	0717	0815	0847	0915	0947	1015	1047	1115	1147	1215	1247	1315	1347	1415	1447	1515	1547	1615	
§ Middleton Cheney, adj The Green	0717	0815	0847	0915	0947	1015	1047	1115	1147	1215	1247	1315	1347	1415	1447	1515	1547	1615	
§ Middleton Cheney, opp New Inn	0718	0816	0848	0916	0948	1016	1048	1116	1148	1216	1248	1316	1348	1416	1448	1516	1548	1616	
§ Middleton Cheney, opp Washie Drive	0718	0816	0848	0916	0948	1016	1048	1116	1148	1216	1248	1316	1348	1416	1448	1516	1548	1616	
<b>Farthinghoe, o/s St Michael's Church</b>	<b>0723</b>	<b>0821</b>	<b>0853</b>	<b>0921</b>	<b>0953</b>	<b>1021</b>	<b>1053</b>	<b>1121</b>	<b>1153</b>	<b>1221</b>	<b>1253</b>	<b>1321</b>	<b>1353</b>	<b>1421</b>	<b>1453</b>	<b>1521</b>	<b>1553</b>	<b>1621</b>	
§ Brackley, opp Farthinghoe Close	0732	0830	0902	0930	1002	1030	1102	1130	1202	1230	1302	1330	1402	1430	1502	1530	1602	1630	
§ Brackley, adj Westhill Avenue	0732	0830	0902	0930	1002	1030	1102	1130	1202	1230	1302	1330	1402	1430	1502	1530	1602	1630	
§ Brackley, adj Manor Road	0733	0831	0903	0931	1003	1031	1103	1131	1203	1231	1303	1331	1403	1431	1503	1531	1603	1631	
§ Brackley, opp Southfield Primary School	0733	0831	0903	0931	1003	1031	1103	1131	1203	1231	1303	1331	1403	1431	1503	1531	1603	1631	
<b>Brackley, opp Market Place</b>	<b>0734</b>	<b>0832</b>	<b>0904</b>	<b>0932</b>	<b>1004</b>	<b>1032</b>	<b>1104</b>	<b>1132</b>	<b>1204</b>	<b>1232</b>	<b>1304</b>	<b>1332</b>	<b>1404</b>	<b>1432</b>	<b>1504</b>	<b>1532</b>	<b>1604</b>	<b>1632</b>	
§ Brackley, o/s Winchester House	—	—	—	—	—	—	—	—	—	—	—	—	—	—	—	—	—	—	—
§ Brackley, opp Jarvis Court	—	—	—	—	—	—	—	—	—	—	—	—	—	—	—	—	—	—	—
§ Brackley, opp Top Station Road	—	—	—	—	—	—	—	—	—	—	—	—	—	—	—	—	—	—	—
§ Brackley, Northampton Road (N-bound)	—	—	—	—	—	—	—	—	—	—	—	—	—	—	—	—	—	—	—
<b>Brackley, opp Jutland Drive</b>	—	—	—	—	—	—	—	—	—	—	—	—	—	—	—	—	—	—	—
§ Brackley, opp Juno Crescent	—	—	—	—	—	—	—	—	—	—	—	—	—	—	—	—	—	—	—
§ Brackley, opp Local Centre	—	—	—	—	—	—	—	—	—	—	—	—	—	—	—	—	—	—	—
§ Brackley, adj Sycamore Close	—	—	—	—	—	—	—	—	—	—	—	—	—	—	—	—	—	—	—
§ Brackley, opp Cemetery Entrance	—	—	—	—	—	—	—	—	—	—	—	—	—	—	—	—	—	—	—
§ Brackley, adj Ellesmere Crescent	—	—	—	—	—	—	—	—	—	—	—	—	—	—	—	—	—	—	—
§ Brackley, nr Ellesmere Avenue	—	—	—	—	—	—	—	—	—	—	—	—	—	—	—	—	—	—	—
§ Brackley, adj Top Station Road	—	—	—	—	—	—	—	—	—	—	—	—	—	—	—	—	—	—	—
§ Brackley, adj Valley Road	—	—	—	—	—	—	—	—	—	—	—	—	—	—	—	—	—	—	—
§ Brackley, adj Church Road	—	—	—	—	—	—	—	—	—	—	—	—	—	—	—	—	—	—	—
<b>Brackley, adj Market Place</b>	—	—	—	—	—	—	—	—	—	—	—	—	—	—	—	—	—	—	—

**Notes:** § - Time at this stop is indicative. You are advised to be at any stop several minutes before the times shown





## Stagecoach in Oxfordshire - Banbury - Brackley

Direction of stops: where shown (eg: W-bound) this is the compass direction towards which the bus is pointing when it stops

[illegible]

**Notes:** § - Time at this stop is indicative. You are advised to be at any stop several minutes before the times shown.

**500****Banbury - (Chacombe) - Middleton Cheney - Brackley**

Stagecoach in Oxfordshire - Banbury - Brackley

Timetable valid from 12/10/2020 until further notice.

Direction of stops: where shown (eg: W-bound) this is the compass direction towards which the bus is pointing when it stops

**Sundays**

<b>Banbury Town Centre, Bus Station (Bay 5)</b>	—	—	—
§ Banbury Town Centre, opp Calthorpe Street	—	—	—
§ Banbury, adj Dashwood Road	—	—	—
<b>Calthorpe, o/s Horton Hospital</b>	—	—	—
§ Calthorpe, opp Hightown Gardens for Hospital	—	—	—
§ Calthorpe, opp Western Crescent	—	—	—
§ Calthorpe, Morrisons (entrance)	—	—	—
<b>Banbury Town Centre, Bus Station (Bay 5)</b>	<b>1600</b>	<b>1700</b>	<b>1800</b>
§ Grimsbury, o/s Co-op	1601	1701	1801
§ Grimsbury, o/s Tesco	<b>arr</b> 1602	1702	1802
§ Grimsbury, o/s Tesco	<b>dep</b> 1602	1702	1802
§ Grimsbury, opp Priory Vale Road	1603	1703	1803
§ Grimsbury, opp Stroud Park	1604	1704	1804
<b>Banbury, in Gateway Retail Park</b>			
§ Chacombe, Banbury Road (Outside 12)			
<b>Chacombe, adj Middleton Road</b>			
§ Middleton Cheney, Banbury Lane Crossroads (SE-bound)	1612	1712	1812
§ Middleton Cheney, nr Stanwell Drive	1613	1713	1813
§ Middleton Cheney, opp Rectory Lane	1614	1714	1814
<b>Middleton Cheney, opp Red Lion</b>	<b>1615</b>	<b>1715</b>	<b>1815</b>
§ Middleton Cheney, o/s Library	1615	1715	1815
§ Middleton Cheney, adj The Green	1615	1715	1815
§ Middleton Cheney, opp New Inn	1616	1716	1816
§ Middleton Cheney, opp Washie Drive	1616	1716	1816
<b>Farthinghoe, o/s St Michael's Church</b>	<b>1621</b>	<b>1721</b>	<b>1821</b>
§ Brackley, opp Farthinghoe Close	1630	1730	1830
§ Brackley, adj Westhill Avenue	1630	1730	1830
§ Brackley, adj Manor Road	1631	1731	1831
§ Brackley, opp Southfield Primary School	1631	1731	1831
<b>Brackley, opp Market Place</b>	<b>1632</b>	<b>1732</b>	<b>1832</b>
§ Brackley, o/s Winchester House	—	—	1833
§ Brackley, opp Jarvis Court	—	—	1835
§ Brackley, opp Top Station Road	—	—	1836
§ Brackley, Northampton Road (N-bound)	—	—	1837
<b>Brackley, opp Jutland Drive</b>	—	—	<b>1840</b>
§ Brackley, opp Juno Crescent	—	—	1840
§ Brackley, opp Local Centre	—	—	1841
§ Brackley, adj Sycamore Close	—	—	1841
§ Brackley, opp Cemetery Entrance	—	—	1842
§ Brackley, adj Ellesmere Crescent	—	—	1842
§ Brackley, nr Ellesmere Avenue	—	—	1842
§ Brackley, adj Top Station Road	—	—	1843
§ Brackley, adj Valley Road	—	—	1843
§ Brackley, adj Church Road	—	—	1844
<b>Brackley, adj Market Place</b>	—	—	<b>1845</b>

**Notes:** § - Time at this stop is indicative. You are advised to be at any stop several minutes before the times shown



500

## Brackley - Middleton Cheney - (Chacombe) - Banbury

Stagecoach in Oxfordshire - Banbury - Brackley

Timetable valid from 12/10/2020 until further notice.

Direction of stops: where shown (eg: W-bound) this is the compass direction towards which the bus is pointing when it stops

## Mondays to Fridays

Service Restrictions	SH	Sch	SH	Sch	SH	Sch													
<b>Brackley, opp Market Place</b>	0620	0704	0704	0727	0727	0747	0747	0809	0842	0914	0932	0952	1014	1042	1104	1132	1204	1232	
\$ Brackley, opp Church Road	0621	0705	0705	0728	0728	0748	0748	0810	0843	0915	0933	0953	1015	1043	1105	1133	1205	1233	
\$ Brackley, opp Jarvis Court	0621	0707	0707	0730	0730	0750	0750	0812	0845	0917	0935	0955	1017	1045	1107	1135	1207	1235	
\$ Brackley, opp Top Station Road	0622	0708	0708	0731	0731	0751	0751	0813	0846	0918	0936	0956	1018	1046	1108	1136	1208	1236	
\$ Brackley, Northampton Road (N-bound)	0623	0709	0709	0732	0732	0752	0752	0814	0847	0919	0937	0957	1019	1047	1109	1137	1209	1237	
<b>Brackley, opp Jutland Drive</b>	0625	0712	0712	0735	0735	0755	0755	0817	0850	0922	0940	1000	1022	1050	1112	1140	1212	1240	
\$ Brackley, opp Juno Crescent	0626	0713	0713	0736	0736	0756	0756	0818	0851	0923	0941	1001	1023	1051	1113	1141	1213	1241	
\$ Brackley, opp Local Centre	0627	0714	0714	0737	0737	0757	0757	0819	0852	0924	0942	1002	1024	1052	1114	1142	1214	1242	
\$ Brackley, adj Sycamore Close	0627	0714	0714	0737	0737	0757	0757	0819	0852	0924	0942	1002	1024	1052	1114	1142	1214	1242	
\$ Brackley, opp Cemetery Entrance	0629	0715	0715	0739	0739	0759	0759	0820	0854	0925	0944	1004	1025	1054	1115	1144	1215	1244	
\$ Brackley, adj Ellesmere Crescent	0630	0716	0716	0740	0740	0800	0800	0821	0855	0926	0945	1005	1026	1055	1116	1145	1216	1245	
\$ Brackley, nr Ellesmere Avenue	0630	0716	0716	0740	0740	0800	0800	0821	0855	0926	0945	1005	1026	1055	1116	1145	1216	1245	
\$ Brackley, adj Top Station Road	0631	0717	0717	0741	0741	0801	0801	0822	0856	0927	0946	1006	1027	1056	1117	1146	1217	1246	
\$ Brackley, adj Valley Road	0632	0717	0717	0742	0742	0802	0802	0822	0857	0927	0947	1007	1027	1057	1117	1147	1217	1247	
\$ Brackley, adj Church Road	0633	0718	0718	0743	0743	0803	0803	0823	0858	0928	0948	1008	1028	1058	1118	1148	1218	1248	
\$ Brackley, opp Winchester House	0633	0719	0719	0743	0743	0803	0803	0824	0858	0929	0948	1008	1029	1058	1119	1148	1219	1248	
<b>Brackley, adj Market Place</b>	0635	0720	0720	0745	0745	0805	0805	0825	0900	0930	0950	1010	1030	1100	1120	1150	1220	1250	
\$ Brackley, adj Southfield Primary School	0635	0720	0720	0745	0745	0805	0805	0825	0900	0930	0950	1010	1030	1100	1120	1150	1220	1250	
\$ Brackley, opp Westhill Avenue	0636	0721	0721	0746	0746	0806	0806	0826	0901	0931	0951	1011	1031	1101	1121	1151	1221	1251	
\$ Brackley, adj Farthinghoe Close	0636	0721	0721	0746	0746	0806	0806	0826	0901	0931	0951	1011	1031	1101	1121	1151	1221	1251	
<b>Farthinghoe, o/s Almshouses</b>	0643	0728	0728	0753	0753	0813	0813	0833	0908	0938	0958	1018	1038	1108	1128	1158	1228	1258	
\$ Middleton Cheney, adj Washle Drive	0649	0734	0734	0759	0759	0819	0819	0839	0914	0944	1004	1024	1044	1114	1134	1204	1234	1304	
\$ Middleton Cheney, o/s New Inn	0650	0735	0735	0800	0800	0820	0820	0840	0915	0945	1005	1025	1045	1115	1135	1205	1235	1305	
\$ Middleton Cheney, opp The Green	0650	0735	0735	0800	0800	0820	0820	0840	0915	0945	1005	1025	1045	1115	1135	1205	1235	1305	
\$ Middleton Cheney, opp Library	0651	0736	0736	0801	0801	0821	0821	0841	0916	0946	1006	1026	1046	1116	1136	1206	1236	1306	
<b>Middleton Cheney, o/s Red Lion</b>	0652	0737	0737	0802	0802	0822	0822	0842	0917	0947	1007	1027	1047	1117	1137	1207	1237	1307	
\$ Middleton Cheney, adj Rectory Lane	0652	0737	0737	0802	0802	0822	0822	0842	0917	0947	1007	1027	1047	1117	1137	1207	1237	1307	
\$ Middleton Cheney, opp Stanwell Drive	0653	0738	0738	0803	0803	0823	0823	0843	0918	0948	1008	1028	1048	1118	1138	1208	1238	1308	
\$ Middleton Cheney, Banbury Lane Crossroads (NW-bound)	0653	0738	0738	0804	0804	0824	0824	0843	0919	0948	1009	1029	1048	1119	1138	1209	1238	1309	
\$ Middleton Cheney, Banbury Lane Crossroads (SW-bound)																			
<b>Chacombe, opp The Ring</b>	0657	0742	0742					0847		0952			1052		1142		1242		
\$ Chacombe, Banbury Road (Opposite 12)	0657	0742	0742					0847		0952			1052		1142		1242		
\$ Grimsbury, o/s Stroud Park	0704	0749	0755	0812	0819	0832	0839	0854	0927	0959	1017	1037	1059	1127	1149	1217	1249	1317	
\$ Grimsbury, adj Priory Vale Road	0705	0750	0757	0813	0821	0833	0841	0855	0928	1000	1018	1038	1100	1128	1150	1218	1250	1318	
\$ Grimsbury, opp Tesco	0706	0751	0758	0814	0823	0834	0843	0856	0929	1001	1019	1039	1101	1129	1151	1219	1251	1319	
\$ Grimsbury, opp Co-op	0707	0752	0800	0815	0824	0835	0844	0857	0930	1002	1020	1040	1102	1130	1152	1220	1252	1320	
<b>Banbury Town Centre, Bus Station (Arrivals YYY)</b>	0708	0753	0802	0817	0827	0837	0847	0858	0932	1003	1022	1042	1103	1132	1153	1222	1253	1322	

## Mondays to Fridays

Brackley, opp Market Place	1304	1332	1404	1432	1504	1532	1552	1614	1642	1712	1734	1752	1819	1842	1914	2000	2058	2158
\$ Brackley, opp Church Road	1305	1333	1405	1433	1505	1533	1553	1615	1643	1713	1735	1753	1820	1843	1915	2001	2059	2159
\$ Brackley, opp Jarvis Court	1307	1335	1407	1435	1507	1535	1555	1617	1645	1715	1737	1755	1822	1845	1917	2002	2101	2201
\$ Brackley, opp Top Station Road	1308	1336	1408	1436	1508	1536	1556	1618	1646	1716	1738	1756	1823	1846	1918	2003	2102	2202
\$ Brackley, Northampton Road (N-bound)	1309	1337	1409	1437	1509	1537	1557	1619	1647	1717	1739	1757	1824	1847	1919	2004	2103	2203
Brackley, opp Jutland Drive	1312	1340	1412	1440	1512	1540	1600	1622	1650	1720	1742	1800	1827	1850	1922	2007	2106	2206
\$ Brackley, opp Juno Crescent	1313	1341	1413	1441	1513	1541	1601	1623	1651	1721	1743	1801	1828	1851	1923	2008	2107	2207
\$ Brackley, opp Local Centre	1314	1342	1414	1442	1514	1542	1602	1624	1652	1722	1744	1802	1829	1852	1924	2009	2108	2208
\$ Brackley, adj Sycamore Close	1314	1342	1414	1442	1514	1542	1602	1624	1652	1722	1744	1802	1829	1852	1924	2009	2108	2208
\$ Brackley, opp Cemetery Entrance	1315	1344	1415	1444	1515	1544	1604	1625	1654	1724	1745	1804	1830	1854	1925	2010	2109	2209
\$ Brackley, adj Ellesmere Crescent	1316	1345	1416	1445	1516	1545	1605	1626	1655	1725	1746	1805	1831	1855	1926	2011	2110	2210
\$ Brackley, nr Ellesmere Avenue	1316	1345	1416	1445	1516	1545	1605	1626	1655	1725	1746	1805	1831	1855	1926	2011	2111	2211
\$ Brackley, adj Top Station Road	1317	1346	1417	1446	1517	1546	1606	1627	1656	1726	1747	1806	1832	1856	1927	2012	2111	2211
\$ Brackley, adj Valley Road	1317	1347	1417	1447	1517	1547	1607	1627	1657	1727	1747	1807	1832	1857	1927	2012	2112	2212
\$ Brackley, adj Church Road	1318	1348	1418	1448	1518	1548	1608	1628	1658	1728	1748	1808	1833	1858	1928	2013	2113	2213
\$ Brackley, opp Winchester House	1319	1348	1419	1448	1519	1548	1608	1629	1658	1728	1749	1808	1834	1858	1929	2014	2113	2213
Brackley, adj Market Place	1320	1350	1420	1450	1520	1550	1610	1630	1700	1730	1750	1810	1835	1900	1930	2015	2115	2215
\$ Brackley, adj Southfield Primary School	1320	1350	1420	1450	1520	1550	1610	1630	1700	1730	1750	1810	1835	1900	1930	2015	2115	2215
\$ Brackley, opp Westhill Avenue	1321	1351	1421	1451	1521	1551	1611	1631	1701	1731	1751	1811	1836	1901	1931	2016	2116	2216
\$ Brackley, adj Farthinghoe Close	1321	1351	1421	1451	1521	1551	1611	1631	1701	1731	1751	1811	1836	1901	1931	2016	2116	2216
Farthinghoe, o/s Almshouses	1328	1358	1428	1458	1528	1558	1618	1638	1708	1738	1758	1818	1843	1908	1938	2023	2123	2223
\$ Middleton Cheney, adj Washle Drive	1334	1404	1434	1504	1534	1604	1624	1644	1714	1744	1804	1824	1849	1914	1944	2028	2128	2228
\$ Middleton Cheney, o/s New Inn	1335	1405	1435	1505	1535	1605	1625	1645	1715	1745	1805	1825	1850	1915	1945	2028	2128	2228
\$ Middleton Cheney, opp The Green	1335	1405	1435	1505	1535	1605	1625	1645	1715	1745	1805	1825	1850	1915	1945	2029	2129	2229
\$ Middleton Cheney, opp Library	1336	1406	1436	1506	1536	1606	1626	1646	1716	1746	1806	1826	1851	1916	1946	2029	2129	2229
Middleton Cheney, o/s Red Lion	1337	1407	1437	1507	1537	1607	1627	1647	1717	1747	1807	1827	1852	1917	1947	2030	2130	2230
\$ Middleton Cheney, adj Rectory Lane	1337	1407	1437	1507	1537	1607	1627	1647	1717	1747	1807	1827	1852	1917	1947	2030	2130	2230
\$ Middleton Cheney, opp Stanwell Drive	1338	1408	1438	1508	1538	1608	1628	1648	1718	1748	1808	1828	1853	1918	1948	2031	2131	2231
\$ Middleton Cheney, Banbury Lane Crossroads (NW-bound)	1338	1409	1438	1509	1538	1609	1629	1648	1719	1749	1808	1829	1853	1919	1948	2031	2131	2231
\$ Middleton Cheney, Banbury Lane Crossroads (SW-bound)																		
Chacombe, opp The Ring	1342		1442		1542			1652			1812		1857		1952	2035		
\$ Chacombe, Banbury Road (Opposite 12)	1342		1442		1542			1652			1812		1857		1952	2035		
\$ Grimsbury, o/s Stroud Park	1349	1417	1449	1521	1552	1621	1641	1702	1731	1801	1819	1837	1904	1927	1959	2041	2138	2238
\$ Grimsbury, adj Priory Vale Road	1350	1418	1450	1522	1553	1622	1642	1703	1732	1802	1820	1838	1905	1928	2000	2042	2139	2239
\$ Grimsbury, opp Tesco	1351	1419	1451	1523	1554	1623	1643	1704	1733	1803	1821	1839	1906	1929	2001	2043	2140	2240
\$ Grimsbury, opp Co-op	1352	1420	1452	1525	1555	1625	1645	1705	1735	1805	1822	1840	1907	1930	2002	2044	2140	2240
Banbury Town Centre, Bus Station (Arrivals YYY)	1353	1422	1453	1527	1557	1627	1647	1707	1737	1807	1823	1842	1908	1932	2003	2045	2142	2242



500

## Brackley - Middleton Cheney - (Chacombe) - Banbury

Stagecoach in Oxfordshire - Banbury - Brackley

Timetable valid from 12/10/2020 until further notice.

Direction of stops: where shown (eg: W-bound) this is the compass direction towards which the bus is pointing when it stops

## Mondays to Fridays

<b>Brackley, opp Market Place</b>	<b>2258</b>
\$ Brackley, opp Church Road	2259
\$ Brackley, opp Jarvis Court	2301
\$ Brackley, opp Top Station Road	2302
\$ Brackley, Northampton Road (N-bound)	2303
<b>Brackley, opp Jutland Drive</b>	<b>2306</b>
\$ Brackley, opp Juno Crescent	2307
\$ Brackley, opp Local Centre	2308
\$ Brackley, adj Sycamore Close	2308
\$ Brackley, opp Cemetery Entrance	2309
\$ Brackley, adj Ellesmere Crescent	2310
\$ Brackley, nr Ellesmere Avenue	2311
\$ Brackley, adj Top Station Road	2311
\$ Brackley, adj Valley Road	2312
\$ Brackley, adj Church Road	2313
\$ Brackley, opp Winchester House	2313
<b>Brackley, adj Market Place</b>	<b>2315</b>
\$ Brackley, adj Southfield Primary School	2315
\$ Brackley, opp Westhill Avenue	2316
\$ Brackley, adj Farthinghoe Close	2316
<b>Farthinghoe, o/s Almshouses</b>	<b>2323</b>
\$ Middleton Cheney, adj Washle Drive	2328
\$ Middleton Cheney, o/s New Inn	2328
\$ Middleton Cheney, opp The Green	2329
\$ Middleton Cheney, opp Library	2329
<b>Middleton Cheney, o/s Red Lion</b>	<b>2330</b>
\$ Middleton Cheney, adj Rectory Lane	2330
\$ Middleton Cheney, opp Stanwell Drive	2331
\$ Middleton Cheney, Banbury Lane Crossroads (NW-bound)	2331
\$ Middleton Cheney, Banbury Lane Crossroads (SW-bound)	
<b>Chacombe, opp The Ring</b>	
\$ Chacombe, Banbury Road (Opposite 12)	
\$ Grimsbury, o/s Stroud Park	2338
\$ Grimsbury, adj Priory Vale Road	2339
\$ Grimsbury, opp Tesco	2340
\$ Grimsbury, opp Co-op	2340
<b>Banbury Town Centre, Bus Station (Arrivals YYY)</b>	<b>2342</b>

## Saturdays

<b>0734</b>	<b>0832</b>	<b>0904</b>	<b>0932</b>	<b>1004</b>	<b>1032</b>	<b>1104</b>	<b>1132</b>	<b>1204</b>	<b>1232</b>	<b>1304</b>
0735	0833	0905	0933	1005	1033	1105	1133	1205	1233	1305
0737	0835	0907	0935	1007	1035	1107	1135	1207	1235	1307
0738	0836	0908	0936	1008	1036	1108	1136	1208	1236	1308
0739	0837	0909	0937	1009	1037	1109	1137	1209	1237	1309
<b>0742</b>	<b>0840</b>	<b>0912</b>	<b>0940</b>	<b>1012</b>	<b>1040</b>	<b>1112</b>	<b>1140</b>	<b>1212</b>	<b>1240</b>	<b>1312</b>
0743	0841	0913	0941	1013	1041	1113	1141	1213	1241	1313
0744	0842	0914	0942	1014	1042	1114	1142	1214	1242	1314
0744	0842	0914	0942	1014	1042	1114	1142	1214	1242	1314
0745	0844	0915	0944	1015	1044	1115	1144	1215	1244	1315
0746	0845	0916	0945	1016	1045	1116	1145	1216	1245	1316
0746	0845	0916	0945	1016	1045	1116	1145	1216	1245	1316
0747	0846	0917	0946	1017	1046	1117	1146	1217	1246	1317
0747	0847	0917	0947	1017	1047	1117	1147	1217	1247	1317
0748	0848	0918	0948	1018	1048	1118	1148	1218	1248	1318
0749	0848	0919	0948	1019	1048	1119	1148	1219	1248	1319
<b>0750</b>	<b>0850</b>	<b>0920</b>	<b>0950</b>	<b>1020</b>	<b>1050</b>	<b>1120</b>	<b>1150</b>	<b>1220</b>	<b>1250</b>	<b>1320</b>
0750	0850	0920	0950	1020	1050	1120	1150	1220	1250	1320
0751	0851	0921	0951	1021	1051	1121	1151	1221	1251	1321
0751	0851	0921	0951	1021	1051	1121	1151	1221	1251	1321
<b>0758</b>	<b>0858</b>	<b>0928</b>	<b>0958</b>	<b>1028</b>	<b>1058</b>	<b>1128</b>	<b>1158</b>	<b>1228</b>	<b>1258</b>	<b>1328</b>
0804	0904	0934	1004	1034	1104	1134	1204	1234	1304	1334
0805	0905	0935	1005	1035	1105	1135	1205	1235	1305	1335
0805	0905	0935	1005	1035	1105	1135	1205	1235	1305	1335
0806	0906	0936	1006	1036	1106	1136	1206	1236	1306	1336
<b>0807</b>	<b>0907</b>	<b>0937</b>	<b>1007</b>	<b>1037</b>	<b>1107</b>	<b>1137</b>	<b>1207</b>	<b>1237</b>	<b>1307</b>	<b>1337</b>
0807	0907	0937	1007	1037	1107	1137	1207	1237	1307	1337
0808	0908	0938	1008	1038	1108	1138	1208	1238	1308	1338
0808	0909	0938	1009	1038	1109	1138	1209	1238	1309	1338
<b>0812</b>	<b>0942</b>	<b>1042</b>	<b>1142</b>	<b>1242</b>	<b>1342</b>					
0812	0942	1042	1142	1242	1342					
0819	0917	0949	1017	1049	1117	1149	1217	1249	1317	1349
0820	0918	0950	1018	1050	1118	1150	1218	1250	1318	1350
0821	0919	0951	1019	1051	1119	1151	1219	1251	1319	1351
0822	0920	0952	1020	1052	1120	1152	1220	1252	1320	1352
<b>0823</b>	<b>0922</b>	<b>0953</b>	<b>1022</b>	<b>1053</b>	<b>1122</b>	<b>1153</b>	<b>1222</b>	<b>1253</b>	<b>1322</b>	<b>1353</b>

## Saturdays

<b>Brackley, opp Market Place</b>	<b>1332</b>	<b>1404</b>	<b>1432</b>	<b>1504</b>	<b>1532</b>	<b>1604</b>	<b>1632</b>	<b>1704</b>	<b>1732</b>	<b>1804</b>	<b>1832</b>	<b>1904</b>	<b>2000</b>	<b>2058</b>	<b>2158</b>	<b>2258</b>
\$ Brackley, opp Church Road	1333	1405	1433	1505	1533	1605	1633	1705	1733	1805	1833	1905	2001	2059	2159	2259
\$ Brackley, opp Jarvis Court	1335	1407	1435	1507	1535	1607	1635	1707	1735	1807	1835	1907	2002	2101	2201	2301
\$ Brackley, opp Top Station Road	1336	1408	1436	1508	1536	1608	1636	1708	1736	1808	1836	1908	2003	2102	2202	2302
\$ Brackley, Northampton Road (N-bound)	1337	1409	1437	1509	1537	1609	1637	1709	1737	1809	1837	1909	2004	2103	2203	2303
<b>Brackley, opp Jutland Drive</b>	<b>1340</b>	<b>1412</b>	<b>1440</b>	<b>1512</b>	<b>1540</b>	<b>1612</b>	<b>1640</b>	<b>1712</b>	<b>1740</b>	<b>1812</b>	<b>1840</b>	<b>1912</b>	<b>2007</b>	<b>2106</b>	<b>2206</b>	<b>2306</b>
\$ Brackley, opp Juno Crescent	1341	1413	1441	1513	1541	1613	1641	1713	1741	1813	1841	1913	2008	2107	2207	2307
\$ Brackley, opp Local Centre	1342	1414	1442	1514	1542	1614	1642	1714	1742	1814	1842	1914	2009	2108	2208	2308
\$ Brackley, adj Sycamore Close	1342	1414	1442	1514	1542	1614	1642	1714	1742	1814	1842	1914	2009	2108	2208	2308
\$ Brackley, opp Cemetery Entrance	1344	1415	1444	1515	1544	1615	1644	1715	1744	1815	1844	1915	2010	2109	2209	2309
\$ Brackley, adj Ellesmere Crescent	1345	1416	1445	1516	1545	1616	1645	1716	1745	1816	1845	1916	2011	2110	2210	2310
\$ Brackley, nr Ellesmere Avenue	1345	1416	1445	1516	1545	1616	1645	1716	1745	1816	1845	1916	2011	2111	2211	2311
\$ Brackley, adj Top Station Road	1346	1417	1446	1517	1546	1617	1646	1717	1746	1817	1846	1917	2012	2111	2211	2311
\$ Brackley, adj Valley Road	1347	1417	1447	1517	1547	1617	1647	1717	1747	1817	1847	1917	2012	2112	2212	2312
\$ Brackley, adj Church Road	1348	1418	1448	1518	1548	1618	1648	1718	1748	1818	1848	1918	2013	2113	2213	2313
\$ Brackley, opp Winchester House	1348	1419	1448	1519	1548	1619	1648	1719	1748	1819	1848	1919	2014	2113	2213	2313
<b>Brackley, adj Market Place</b>	<b>1350</b>	<b>1420</b>	<b>1450</b>	<b>1520</b>	<b>1550</b>	<b>1620</b>	<b>1650</b>	<b>1720</b>	<b>1750</b>	<b>1820</b>	<b>1850</b>	<b>1920</b>	<b>2015</b>	<b>2115</b>	<b>2215</b>	<b>2315</b>
\$ Brackley, adj Southfield Primary School	1350	1420	1450	1520	1550	1620	1650	1720	1750	1820	1850	1920	2015	2115	2215	2315
\$ Brackley, opp Westhill Avenue	1351	1421	1451	1521	1551	1621	1651	1721	1751	1821	1851	1921	2016	2116	2216	2316
\$ Brackley, adj Farthinghoe Close	1351	1421	1451	1521	1551	1621	1651	1721	1751	1821	1851	1921	2016	2116	2216	2316
<b>Farthinghoe, o/s Almshouses</b>	<b>1358</b>	<b>1428</b>	<b>1458</b>	<b>1528</b>	<b>1558</b>	<b>1628</b>	<b>1658</b>	<b>1728</b>	<b>1758</b>	<b>1828</b>	<b>1858</b>	<b>1928</b>	<b>2023</b>	<b>2123</b>	<b>2223</b>	<b>2323</b>
\$ Middleton Cheney, adj Washle Drive	1404	1434	1504	1534	1604	1634	1704	1734	1804	1834	1904	1934	2028	2128	2228	2328
\$ Middleton Cheney, o/s New Inn	1405	1435	1505	1535	1605	1635	1705	1735	1805	1835	1905	1935	2028	2128	2228	2328
\$ Middleton Cheney, opp The Green	1405	1435	1505	1535	1605	1635	1705	1735	1805	1835	1905	1935	2029	2129	2229	2329
\$ Middleton Cheney, opp Library	1406	1436	1506	1536	1606	1636	1706	1736	1806	1836	1906	1936	2029	2129	2229	2329
<b>Middleton Cheney, o/s Red Lion</b>	<b>1407</b>	<b>1437</b>	<b>1507</b>	<b>1537</b>	<b>1607</b>	<b>1637</b>	<b>1707</b>	<b>1737</b>	<b>1807</b>	<b>1837</b>	<b>1907</b>	<b>1937</b>	<b>2030</b>	<b>2130</b>	<b>2230</b>	<b>2330</b>
\$ Middleton Cheney, adj Rectory Lane	1407	1437	1507	1537	1607	1637	1707	1737	1807	1837	1907	1937	2030	2130	2230	2330
\$ Middleton Cheney, opp Stanwell Drive	1408	1438	1508	1538	1608	1638	1708	1738	1808	1838	1908	1938	2031	2131	2231	2331
\$ Middleton Cheney, Banbury Lane Crossroads (NW-bound)	1409	1438	1509	1538	1609	1638	1709	1738	1809	1838	1909	1938	2031	2131	2231	2331
\$ Middleton Cheney, Banbury Lane Crossroads (SW-bound)																
<b>Chacombe, opp The Ring</b>		<b>1442</b>		<b>1542</b>		<b>1642</b>		<b>1742</b>		<b>1842</b>		<b>1942</b>	<b>2035</b>			
\$ Chacombe, Banbury Road (Opposite 12)		1442		1542		1642		1742		1842		1942	2035			
\$ Grimsbury, o/s Stroud Park	1417	1449	1517	1549	1617	1649	1717	1749	1817	1849	1917	1949	2041	2138	2238	2338
\$ Grimsbury, adj Priory Vale Road	1418	1450	1518	1550	1618	1650	1718	1750	1818	1850	1918	1950	2042	2139	2239	2339
\$ Grimsbury, opp Tesco	1419	1451	1519	1551	1619	1651	1719	1751	1819	1851	1919	1951	2043	2140	2240	2340
\$ Grimsbury, opp Co-op	1420	1452	1520	1552	1620	1652	1720	1752	1820	1852	1920	1952	2044	2140	2240	2340
<b>Banbury Town Centre, Bus Station (Arrivals YYY)</b>	<b>1422</b>	<b>1453</b>	<b>1522</b>	<b>1553</b>	<b>1622</b>	<b>1653</b>	<b>1722</b>	<b>1753</b>	<b>1822</b>	<b>1853</b>	<b>1922</b>	<b>1953</b>	<b>2045</b>	<b>2142</b>	<b>2242</b>	<b>2342</b>

Notes: \$ - Time at this stop is indicative. You are advised to be at any stop several minutes before the times shown

**500****Brackley - Middleton Cheney - (Chacombe) - Banbury**

Stagecoach in Oxfordshire - Banbury - Brackley

Timetable valid from 12/10/2020 until further notice.

Direction of stops: where shown (eg: W-bound) this is the compass direction towards which the bus is pointing when it stops

**Sundays**

<b>Brackley, opp Market Place</b>	<b>0735</b>	<b>0832</b>	<b>0932</b>	<b>1032</b>	<b>1132</b>	<b>1232</b>	<b>1332</b>	<b>1432</b>	<b>1532</b>	<b>1632</b>	<b>1732</b>
\$ Brackley, opp Church Road	0736	0833	0933	1033	1133	1233	1333	1433	1533	1633	1733
\$ Brackley, opp Jarvis Court	0736	0835	0935	1035	1135	1235	1335	1435	1535	1635	1735
\$ Brackley, opp Top Station Road	0737	0836	0936	1036	1136	1236	1336	1436	1536	1636	1736
\$ Brackley, Northampton Road (N-bound)	0738	0837	0937	1037	1137	1237	1337	1437	1537	1637	1737
<b>Brackley, opp Jutland Drive</b>	<b>0740</b>	<b>0840</b>	<b>0940</b>	<b>1040</b>	<b>1140</b>	<b>1240</b>	<b>1340</b>	<b>1440</b>	<b>1540</b>	<b>1640</b>	<b>1740</b>
\$ Brackley, opp Juno Crescent	0741	0841	0941	1041	1141	1241	1341	1441	1541	1641	1741
\$ Brackley, opp Local Centre	0742	0842	0942	1042	1142	1242	1342	1442	1542	1642	1742
\$ Brackley, adj Sycamore Close	0742	0842	0942	1042	1142	1242	1342	1442	1542	1642	1742
\$ Brackley, opp Cemetery Entrance	0744	0844	0944	1044	1144	1244	1344	1444	1544	1644	1744
\$ Brackley, adj Ellesmere Crescent	0745	0845	0945	1045	1145	1245	1345	1445	1545	1645	1745
\$ Brackley, nr Ellesmere Avenue	0745	0845	0945	1045	1145	1245	1345	1445	1545	1645	1745
\$ Brackley, adj Top Station Road	0746	0846	0946	1046	1146	1246	1346	1446	1546	1646	1746
\$ Brackley, adj Valley Road	0747	0847	0947	1047	1147	1247	1347	1447	1547	1647	1747
\$ Brackley, adj Church Road	0748	0848	0948	1048	1148	1248	1348	1448	1548	1648	1748
\$ Brackley, opp Winchester House	0748	0848	0948	1048	1148	1248	1348	1448	1548	1648	1748
<b>Brackley, adj Market Place</b>	<b>0750</b>	<b>0850</b>	<b>0950</b>	<b>1050</b>	<b>1150</b>	<b>1250</b>	<b>1350</b>	<b>1450</b>	<b>1550</b>	<b>1650</b>	<b>1750</b>
\$ Brackley, adj Southfield Primary School	0750	0850	0950	1050	1150	1250	1350	1450	1550	1650	1750
\$ Brackley, opp Westhill Avenue	0751	0851	0951	1051	1151	1251	1351	1451	1551	1651	1751
\$ Brackley, adj Farthinghoe Close	0751	0851	0951	1051	1151	1251	1351	1451	1551	1651	1751
<b>Farthinghoe, o/s Almshouses</b>	<b>0758</b>	<b>0858</b>	<b>0958</b>	<b>1058</b>	<b>1158</b>	<b>1258</b>	<b>1358</b>	<b>1458</b>	<b>1558</b>	<b>1658</b>	<b>1758</b>
\$ Middleton Cheney, adj Washle Drive	0803	0903	1003	1103	1203	1303	1403	1503	1603	1703	1803
\$ Middleton Cheney, o/s New Inn	0803	0903	1003	1103	1203	1303	1403	1503	1603	1703	1803
\$ Middleton Cheney, opp The Green	0804	0904	1004	1104	1204	1304	1404	1504	1604	1704	1804
\$ Middleton Cheney, opp Library	0804	0904	1004	1104	1204	1304	1404	1504	1604	1704	1804
<b>Middleton Cheney, o/s Red Lion</b>	<b>0805</b>	<b>0905</b>	<b>1005</b>	<b>1105</b>	<b>1205</b>	<b>1305</b>	<b>1405</b>	<b>1505</b>	<b>1605</b>	<b>1705</b>	<b>1805</b>
\$ Middleton Cheney, adj Rectory Lane	0805	0905	1005	1105	1205	1305	1405	1505	1605	1705	1805
\$ Middleton Cheney, opp Stanwell Drive	0806	0906	1006	1106	1206	1306	1406	1506	1606	1706	1806
\$ Middleton Cheney, Banbury Lane Crossroads (NW-bound)	0807	0907	1007	1107	1207	1307	1407	1507	1607	1707	1807
\$ Middleton Cheney, Banbury Lane Crossroads (SW-bound)											
<b>Chacombe, opp The Ring</b>											
\$ Chacombe, Banbury Road (Opposite 12)											
\$ Grimsbury, o/s Stroud Park	0815	0915	1015	1115	1215	1315	1415	1515	1615	1715	1815
\$ Grimsbury, adj Priory Vale Road	0816	0916	1016	1116	1216	1316	1416	1516	1616	1716	1816
\$ Grimsbury, opp Tesco	0817	0917	1017	1117	1217	1317	1417	1517	1617	1717	1817
\$ Grimsbury, opp Co-op	0818	0918	1018	1118	1218	1318	1418	1518	1618	1718	1818
<b>Banbury Town Centre, Bus Station (Arrivals YYY)</b>	<b>0820</b>	<b>0920</b>	<b>1020</b>	<b>1120</b>	<b>1220</b>	<b>1320</b>	<b>1420</b>	<b>1520</b>	<b>1620</b>	<b>1720</b>	<b>1820</b>

**Notes:** \$ - Time at this stop is indicative. You are advised to be at any stop several minutes before the times shown



500

## Banbury - (Chacombe) - Middleton Cheney - Brackley

Stagecoach in Oxfordshire - Banbury - Brackley

For times of the next departures from a particular stop you can use **traveline-txt** - by sending the SMS code to **84268**. Add the service number after the code if you just want a specific service - eg: **buctdgt 60**. The return message from **traveline-txt** will show the next three departures, and it currently costs 25p plus any message sending charge. Departure times will be real-time predictions where available, or scheduled departure times if not.

You can also get the same information by using the SMS code at [www.nextbuses.mobi](http://www.nextbuses.mobi) (only normal browsing charges apply) or through several iPhone or Android apps that offer access to **NextBuses**.

**NOTE: SMS codes are different in each direction. Make sure you choose the right direction from these lists.**

SMS Code	Stop Name	Street	ATCO Code
oxfampda	Banbury Town Centre, Bus Station (Bay 5)	Bus Station	3400000725
oxfagwat	Banbury Town Centre, opp Calthorpe Street	Calthorpe Street	340001456OPP
oxfgtagm	Banbury, adj Dashwood Road	South Bar Street	340001345OPP
oxfapgtm	Calthorpe, o/s Horton Hospital	Oxford Road	340000878ENT
oxfgajaw	Calthorpe, opp Hightown Gardens for Hospital	Hightown Road	340003166OPP
oxfgajda	Calthorpe, opp Western Crescent	Hightown Road	340003165OPP
oxfagjgd	Calthorpe, Morrisons (entrance)	Swan Close Road	340001399ENT
oxfagjwg	Grimsbury, o/s Co-op	Middleton Road	340001414MR
oxfagjwa	Grimsbury, o/s Tesco	Middleton Road	340001415OUT
oxfgpwmj	Grimsbury, opp Priory Vale Road	Middleton Road	340001623OPP
oxfagwgd	Grimsbury, opp Stroud Park	Erment Way	340001461EAS
oxfgtmda	Banbury, in Gateway Retail Park	car park	340001461GRP
nthdamga	Chacombe, Banbury Road (Outside 12)	Banbury Road	300000534TH
nthdamgd	Chacombe, adj Middleton Road	The Ring	300000534TL
nthdgpdt	Middleton Cheney, Banbury Lane Crossroads (SE-bound)	Chacombe Road	300000614CM
nthdgpma	Middleton Cheney, nr Stanwell Drive	Chacombe Road	300000614SD
nthdgpdm	Middleton Cheney, opp Rectory Lane	High Street	300000614CC
nthdgpjt	Middleton Cheney, opp Red Lion	High Street	300000614RL
nthdgpjp	Middleton Cheney, o/s Library	Main Road	300000614L
nthdgpjg	Middleton Cheney, adj The Green	Main Road	300000614G
nthdgpjw	Middleton Cheney, opp New Inn	Main Road	300000614ON
nthdgpjt	Middleton Cheney, opp Washle Drive	Main Road	300000614LG
nthdgpmt	Farthinghoe, o/s St Michael's Church	Main Road	300000615C
nthdmjwg	Brackley, opp Farthinghoe Close	Banbury Road	300000037P
nthadagm	Brackley, adj Westhill Avenue	Banbury Road	300000037WA
nthdpgwp	Brackley, adj Manor Road	Banbury Road	300000037BM
nthadamt	Brackley, opp Southfield Primary School	Banbury Road	300000037B
nthadatm	Brackley, opp Market Place	High Street	300000037G
nthdwdpm	Brackley, o/s Winchester House	High Street	300000037WS
nthdwdpg	Brackley, opp Jarvis Court	Burwell Hill	300000037JC
nthadaga	Brackley, opp Top Station Road	Burwell Hill	300000037TS
nthdwmwa	Brackley, Northampton Road (N-bound)	Northampton Road	300000037NN
nthdwmjg	Brackley, opp Jutland Drive	Poppyfields Way	300000037JT
nthdwmja	Brackley, opp Juno Crescent	Poppyfields Way	300000037OJ
nthdwmpt	Brackley, opp Local Centre	Poppyfields Way	300000037OL
nthdwmjp	Brackley, adj Sycamore Close	Halse Road	300000037SC
nthadadm	Brackley, opp Cemetery Entrance	Halse Road	300000037HM
nthadap	Brackley, adj Ellesmere Crescent	Bridgewater Road	300000037E
nthdpjad	Brackley, nr Ellesmere Avenue	Ellesmere Road	300000037ER
nthdapd	Brackley, adj Top Station Road	Burwell Hill	300000037BU
nthdtpgd	Brackley, adj Valley Road	High Street	300000037VR
nthadatp	Brackley, adj Church Road	High Street	300000037H
nthdmjtp	Brackley, adj Market Place	High Street	300000037MT





500

## Brackley - Middleton Cheney - (Chacombe) - Banbury

Stagecoach in Oxfordshire - Banbury - Brackley

For times of the next departures from a particular stop you can use **traveline-txt** - by sending the SMS code to **84268**. Add the service number after the code if you just want a specific service - eg: **buctdgt 60**. The return message from **traveline-txt** will show the next three departures, and it currently costs 25p plus any message sending charge. Departure times will be real-time predictions where available, or scheduled departure times if not.

You can also get the same information by using the SMS code at [www.nextbuses.mobi](http://www.nextbuses.mobi) (only normal browsing charges apply) or through several iPhone or Android apps that offer access to **NextBuses**.

**NOTE: SMS codes are different in each direction. Make sure you choose the right direction from these lists.**

SMS Code	Stop Name	Street	ATCO Code
nthadatm	Brackley, opp Market Place	High Street	300000037G
nthadadj	Brackley, opp Church Road	High Street	300000037HI
nthdwdpg	Brackley, opp Jarvis Court	Burwell Hill	300000037JC
nthadaga	Brackley, opp Top Station Road	Burwell Hill	300000037TS
nthdwmwa	Brackley, Northampton Road (N-bound)	Northampton Road	300000037NN
nthdwmjg	Brackley, opp Jutland Drive	Poppyfields Way	300000037JT
nthdwmja	Brackley, opp Juno Crescent	Poppyfields Way	300000037OJ
nthdwmpt	Brackley, opp Local Centre	Poppyfields Way	300000037OL
nthdwmjp	Brackley, adj Sycamore Close	Halse Road	300000037SC
nthadadm	Brackley, opp Cemetery Entrance	Halse Road	300000037HM
nthadapt	Brackley, adj Ellesmere Crescent	Bridgewater Road	300000037E
nthdpjad	Brackley, nr Ellesmere Avenue	Ellesmere Road	300000037ER
nthadapd	Brackley, adj Top Station Road	Burwell Hill	300000037BU
nthdtpgd	Brackley, adj Valley Road	High Street	300000037VR
nthadatp	Brackley, adj Church Road	High Street	300000037H
nthdwdpj	Brackley, opp Winchester House	High Street	300000037OS
nthdmjtp	Brackley, adj Market Place	High Street	300000037MT
nthdmpdp	Brackley, adj Southfield Primary School	Banbury Road	300000037SF
nthadapa	Brackley, opp Westhill Avenue	Banbury Road	300000037BS
nthdmjwj	Brackley, adj Farthinghoe Close	Banbury Road	300000037PA
nthdgpjmj	Farthinghoe, o/s Almshouses	Main Road	300000615A
nthdgpww	Middleton Cheney, adj Washle Drive	Main Road	300000614LO
nthdgpja	Middleton Cheney, o/s New Inn	Main Road	300000614NI
nthdgpjm	Middleton Cheney, opp The Green	Main Road	300000614GR
nthdgpmm	Middleton Cheney, opp Library	Main Road	300000614TA
nthdgpjm	Middleton Cheney, o/s Red Lion	High Street	300000614R
nthdgpjp	Middleton Cheney, adj Rectory Lane	Chacombe Road	300000614RE
nthdgpmd	Middleton Cheney, opp Stanwell Drive	Chacombe Road	300000614SW
nthdgpdp	Middleton Cheney, Banbury Lane Crossroads (NW-bound)	Appletree Road	300000614CH
nthdgpdw	Middleton Cheney, Banbury Lane Crossroads (SW-bound)	Banbury Lane	300000614CR
nthdamgj	Chacombe, opp The Ring	Banbury Road	300000534TR
nthdamdw	Chacombe, Banbury Road (Opposite 12)	Banbury Road	300000534BR
oxfgpwwm	Grimsbury, o/s Stroud Park	Erment Way	340001461SEA
oxfgpwwm	Grimsbury, adj Priory Vale Road	Middleton Road	340001623PVR
oxfgjwd	Grimsbury, opp Tesco	Middleton Road	340001415OEA
oxfgmtpj	Grimsbury, opp Co-op	Middleton Road	340001414OPP
oxfgpjmp	Banbury Town Centre, Bus Station (Arrivals YYY)	Bus Station	340000001730



500

## Banbury - (Chacombe) - Middleton Cheney - Brackley

Stagecoach in Oxfordshire - Banbury - Brackley

## Service Restrictions

## SH - Oxfordshire School Holidays

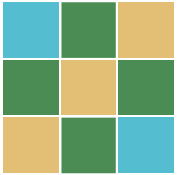
		Mo	Tu	We	Th	Fr	Sa	Su	Mo	Tu	We	Th	Fr	Sa	Su	Mo	Tu	We	Th	Fr	Sa	Su	Mo	Tu	We	Th	Fr	Sa	Su	Mo	Tu						
2020	October					1	2	3	4	5	6	7	8	9	10	11	12	13	14	15	16	17	18	19	20	21	22	23	24	25	26	27	28	29	30	31	
	November							1	2	3	4	5	6	7	8	9	10	11	12	13	14	15	16	17	18	19	20	21	22	23	24	25	26	27	28	29	30
	December		1	2	3	4	5	6	7	8	9	10	11	12	13	14	15	16	17	18	19	20	21	22	23	24	25	26	27	28	29	30	31				

## Sch - Oxfordshire School Day

		Mo	Tu	We	Th	Fr	Sa	Su	Mo	Tu	We	Th	Fr	Sa	Su	Mo	Tu	We	Th	Fr	Sa	Su	Mo	Tu	We	Th	Fr	Sa	Su	Mo	Tu						
2020	October				1	2	3	4	5	6	7	8	9	10	11	12	13	14	15	16	17	18	19	20	21	22	23	24	25	26	27	28	29	30	31		
	November							1	2	3	4	5	6	7	8	9	10	11	12	13	14	15	16	17	18	19	20	21	22	23	24	25	26	27	28	29	30
	December		1	2	3	4	5	6	7	8	9	10	11	12	13	14	15	16	17	18	19	20	21	22	23	24	25	26	27	28	29	30	31				

- # Days of operation
- # Mo = Monday, Tu = Tuesday, We = Wednesday, Th = Thursday, Fr = Friday
- # Sa = Saturday
- # Su = Sunday





COTSWOLD  
TRANSPORT  
PLANNING

## Appendix C

Example Travel Plan

## EXAMPLE TRAVEL SURVEY

**1. If you are in employment, how do you travel to work most days?**

- ☐ Car, on your own
- ☐ Car, with others
- ☐ Train
- ☐ Bus
- ☐ Bicycle
- ☐ Foot
- ☐ Motorbike
- ☐ Work from home
- ☐ N/A
- ☐ Other (please specify)

**2. If you have school age children, how do they travel to school?**

- ☐ Car, with you
- ☐ Car, with school peers
- ☐ Train
- ☐ Bus
- ☐ Bicycle
- ☐ Foot
- ☐ N/A
- ☐ Other (please specify)

**3. How do you travel around Bishops Cleeve?**

- ☐ Car
- ☐ Car share (with non-family)
- ☐ Bus
- ☐ Bicycle
- ☐ Foot
- ☐ N/A
- ☐ Other (please specify)

**4. How many cars are owned by your household?**

.....

**5. How far do you travel to work?**

- ☐ Less than 1 mile
- ☐ 1 to 5 miles
- ☐ 6 to 10 miles
- ☐ Over 10 miles
- ☐ N/A

**6. Do you have any further transport related comments (i.e. barriers to sustainable travel or issues on certain routes to work / school etc)?**

.....

.....

.....

.....

.....

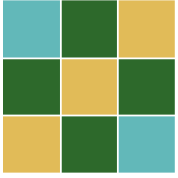
.....

.....

.....

.....

**Thank you for taking the time to fill out the questionnaire.**



COTSWOLD  
TRANSPORT  
PLANNING

Cotswold Transport Planning Ltd

Please visit our website at:  
[www.cotswoldtp.co.uk](http://www.cotswoldtp.co.uk)

Office locations in:  
Bedford  
Bristol  
Cheltenham (HQ)

Copyright

The contents of this document must not be copied or reproduced in whole or in part without the written consent of Cotswold Transport Planning Ltd.

Copyright © Cotswold Transport Planning Ltd. All Rights Reserved.

Registered Office: CTP House Knapp Road, Cheltenham Gloucestershire,  
GL50 3QQ Registered in England and Wales No. 9228763.