

FLADBURY

The Proposal

Through this leaflet Framptons, on behalf of Vale Green Energy (VGE) Ltd, would like to update the local community and selected stakeholders of a planning application being prepared for a new gas extraction facility at their operational site at Evesham Road, Fladbury. VGE remain committed to sensitively integrating the business into the local community and therefore have taken this decision to undertake this leaflet drop given the present inability to hold a physical exhibition event due to COVID-19 gathering restrictions.

Vale Green Energy is dedicated to sustainable energy production. Their site currently contains an anaerobic digestion plant that generates biomethane fuel from the natural anaerobic digestion process, which is used to heat and light VGE's horticultural operations with excess fuel being returned to the grid. This proposed new facility will sit on vacant land adjacent to the existing plant and will provide for the re-use of processed gas that would have otherwise been wasted, back onto the National Grid as a clean processed material.

The key benefit of this process is that the gas being extracted is imported from other sites and exported to the grid when otherwise it would be simply flared off and lost. Therefore, the benefit is one of renewable and sustainable fuel generation to the benefit of all. VGE's site in Fladbury is a unique location for the facility as it has an unlimited export allowance back on to the grid, ensuring gas is recycled instead of being unused.

The scheme will generate two jobs directly for VGE as well as associated indirect jobs such as drivers and maintenance engineers.

The application is supported by CNG services, who provide consultancy and project management expertise relating to the use of natural gas.

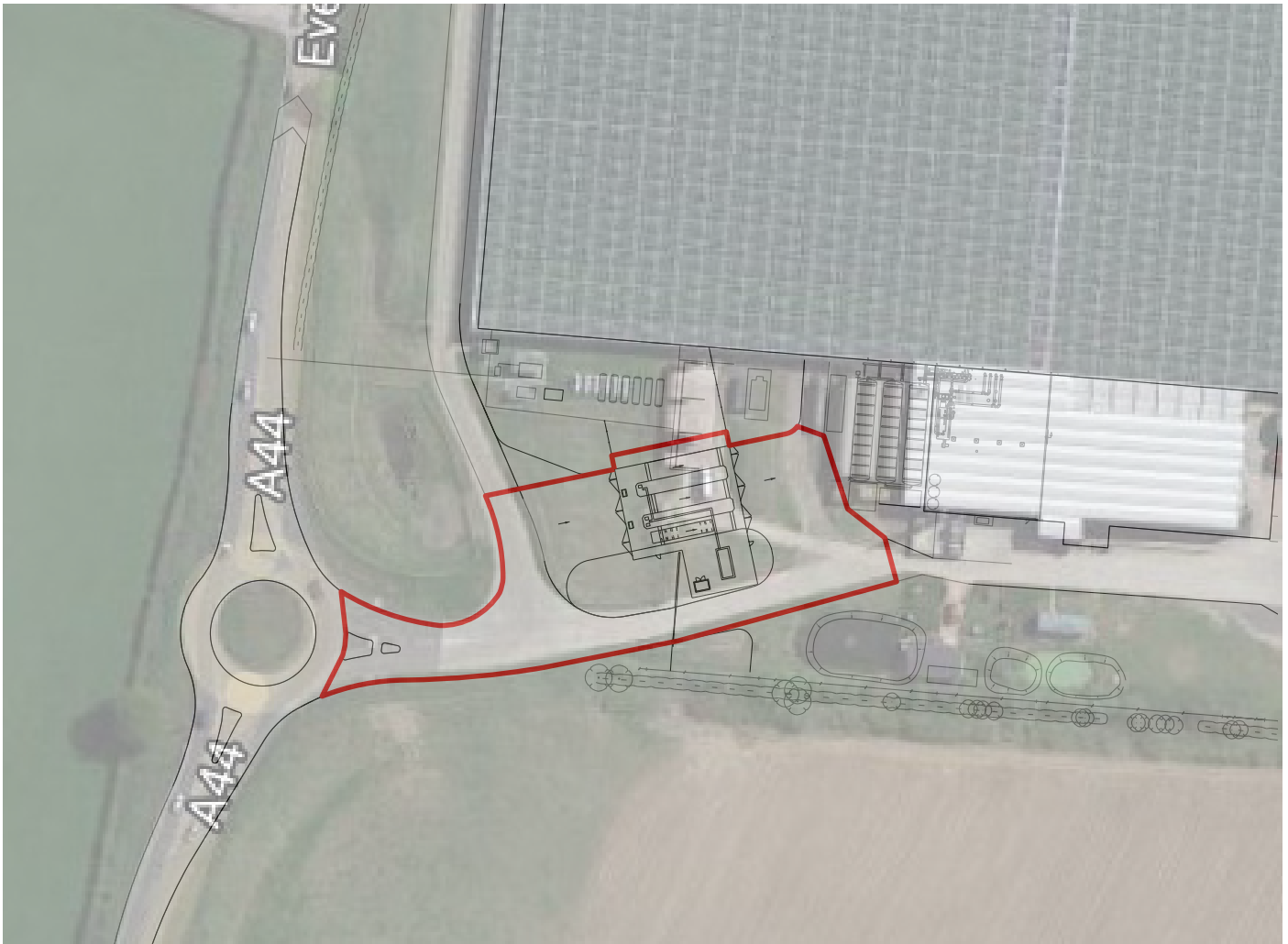
How will the facility work?

The gas is refined from waste product at its source location, and imported in vehicles from offsite locations to this facility as clean processed gas. The vehicle will connect to one of the gas extraction bays, and the gas is released from the vehicle and back onto the National Grid via VGE's existing grid connections. The off-loading process takes around 16-20 hours. The facility has capacity for continual export of gas to the grid whilst the switchover of vehicles takes place, therefore there will only be 2 vehicle movements to the facility in any 24-hour period.

The facility itself will comprise a concrete base to accommodate 3 pumping stations with underground piping system. The gas being transferred will be odourless and will not be released into the atmosphere which, along with the low vehicle movements, means the development will not create disturbance in the local area.

The facility will be encompassed by a timber close boarded fence, along with new landscaped planting from the A44 roundabout into the site to provide ample screening.

The Site Plan



Next Stages

Stage 1: Leaflet Drop

This leaflet provides an update on the progression of the planning application. Further plans can be found on Framptons website.

Stage 2: Review development proposals following further comments

Revise any further comments received following the leaflet drop and amend/refine the proposals where necessary. Technical reports which will accompany a planning application will be finalised.

Stage 3: Submission of planning applications

Submit formal planning application to Wychavon District Council for their consideration in September/October 2020.

To submit comments, please do so by the following options: -

Post: Frampton Town Planning Ltd, Oriel House, 42 North Bar, Banbury, Oxfordshire, OX16 0TH

Email: enquiries@framptons-planning.com

Website: www.framptons-planning.com