

16.0 SOCIO-ECONOMIC

16.1 Introduction

16.1.1 This revised Socio-economic Chapter includes the changes to the Socio-economic Chapter dated January 2018 submitted with the planning application. This chapter only includes changes to the 2018 Chapter and so should be read in conjunction with that chapter. Note, the paragraph numbers in this chapter may not align with the January 2018 Chapter.

16.2 Methodology

16.2.1 No change

16.3 Baseline Conditions

Demographics, Housing Need and Economic Activity

16.3.1 **Table 16.1 – Population, Household and Economically Active Statistics** – the table has been updated to include the latest information on economically active people (NOMIS 2018/2019).

Area	Total Pop.	Economically Active		Total Households	Households With no. cars		Average H'hold Size
		No.	%		No.	%	
Whitford Ward	4,840	2,696	55.3	1,953	248	12.	2.48
Bromsgrove	93,400 98700	48,664 49,000	52.1 49	38,290	4,771	12. 5	2.43
West Midlands	5,455,200 5,900,800	2,778,859 2,838,066	50.9 48	2,294,909	566,621	24. 7	2.37
England	52,234,000 55,977,178	38,881,374 31,935,008	74.4 78	22,063,368	5,691,251	25. 8	2.36

Source: Office of National Statistics, National Census 2011, accessed 16th August 2016.
Red text NOMIS 2018/2019.

16.3.2 **Table 16.2 Population Age Structure (March 2011)** has been updated to include any changes to the local population included in the ONS-2018 based population projections published in January 2020. The population for Whitford Road remains as from the Census 2011.

Table 16.2 – Population Age Structure (March 2011)

Source: Office of National Statistics, National Census 2011, accessed 16th August 2016

Red text shows the ONS- 2018 based population

Age	Whitford Ward		Bromsgrove District 2018		West Midlands 2018		England 2018	
	Count	%	Count	%	Count	%	Count	%
Aged 0 – 19	1,148	23.8	21,023 21,758	22 22	1,391,931 1,435,631	24.9 24.3	12,712,275 13,241,287	24 23.7
Aged 20 – 44	1,457	30.1	26,570 26,811	28.3 27.2	1,853,840 1,889,125	33.1 32.0	18,190,473 18,224,242	34.3 32.6
Aged 45 – 64	1,445	29.8	26,909 27,925	28.7 28.3	1,410,101 1,486,765	25.2 25.2	13,449,179 14,332,396	25.4 25.6
Aged 65 +	790	16.3	19,135 22,168	20.5 22.4	945,975 1,089,236	16.9 18.5	8,660,529 10,179,253	16.4 18.2

16.3.3 The assessment of the demographic profile and projected population growth has not materially changed.

16.3.4 **Table 16.3 Tenure of Households at 2011** - no change

16.3.5 **Table 16.4 – Accommodation Types** – no change

16.3.6 The Worcestershire Strategic Housing Market Assessment (“SHMA”), published February 2012, remains the most comprehensive and up to date assessment of the current and future housing needs of the District. The analysis included in the January 2018 Chapter remains valid.

16.3.7 The job density was 0.98 for Bromsgrove, 0.81 for the west midlands and 0.86 for Great Britain (NOMIS 2018-2019).

16.3.8 The Bromsgrove Annual Monitoring Report 2018/2019 (AMR) updated the employment land position within the District. The Local Plan includes 28ha of employment land to be readily available up until 2030. The AMR reported that 7.16ha of employment land has been delivered since 2011, which equates to 25.4% of the District’s total employment land requirement. 0.30ha of employment land was completed on allocated employment sites in 2018/2019, and 0.13ha of employment land completed on previously developed land. All completions this monitoring year were in B1 use.

16.3.9 **Open Space** – no change

Table 16.5 – Provision of Open Space across Bromsgrove District – no change

Table 16.6 – Recommended Local Standards of Provision of Open Space within Bromsgrove – no change

Education

16.3.10 **Table 16.7 - Education Provision Locally** has been updated to reflect the most up to date changes to capacity and numbers of children on the school roll.

Table 16.7 – Education Provision locally

N	Level	School Name	NOR	Capacity	Surplus / Deficit
1	Primary	Bromsgrove Preparatory (Private)	-	-	-
2		Charford First School	434 424	450	+16 +26
3		Dodford First School	61 71	75	+14 +4
4		Finstall First School	300 301	296	-4 -5
5		Meadows First School	300 302	300	0 -2
6		Millfield First School	238 288	221 300	+17 +12

7		St. Peter's Catholic First School	269 275	300	+31 +25
8		Sidemoor First School	294 285	300	+6 +15
Total Surplus / Deficit of Places at Primary School level @ Jan.2013 @ Jan. 2019					+46 +75
1	Secondary	Aston Fields Middle School	597 585	600	+3 +15
2		Bromsgrove School (Private)	-	-	-
3		Bigby Hall School (Special Needs)	-	-	-
4		Catshill Middle School	285 307	360 480	+75 +173
5		Chadgrove School (Private)	-	-	-
6		North Bromsgrove High School	762 816	1,041	+279 +225
7		Parkside Middle School	490 558	480 520	-12 -38
8		South Bromsgrove Community High School	1,348 1331	1,294 1309	-54 -22
9		St. John's CofE Middle School	648 640	600	-48 -40
Total Surplus / Deficit of Places at Secondary School level @ Jan.2013 @ Jan. 2019					+243 +313

Source: Worcestershire County Council Spring School Census 2019 and Worcestershire School Capacity Survey 2018

16.3.11 The commentary included in the Worcestershire School Capacity Survey 2018 (WSCS) states that, after several years of growth, the birth rate in Worcestershire is expected to stabilize. The number of children in Primary and First schools across Worcestershire is expected to be between 44,000 and 45,000. The WSCS acknowledged that additional expansion will be required in response to large housing allocation.

16.3.12 The WSCS stated, that in terms of the higher primary school numbers and areas with a three-tier system (Primary, Middle and Senior), children are now reaching secondary school transfer age. The WSCS anticipates that there is capacity to accommodate the first wave of higher cohort of pupils, with additional capacity being required in the longer term. Worcestershire County Council (WCC) have been working with Secondary and High schools to support higher number, with anticipated further expensing of schools in the future.

Health Provision

Hospitals & GP Surgeries

16.3.13 No change to provision of primary care facilities.

16.3.14 **Table 16.8 List of GP Surgeries within 7 miles of the Assessment site** has been updated to reflect the most up to date changes to the local GP provision.

Table 16.8 – List of GP Surgeries within 7 miles of the Assessment Site

Source: NHS Choices Website, accessed May 2020

GP Surgery	Distance from the Assessment Site	No. of GP on Registered	No. of Patients on Roll	No. of GP's required to serve patients on Roll based on NHS average of 1,800 persons per GP
New Road Surgery	1.5 miles	7 8	12,715 13070	7.0 7.26 (rounded to 7)
Davenal House Surgery	1.6 miles	9 10	8,810 8858	4.9 (rounded to 5)
St. Johns Surgery	1.7 miles	7 8	12,374 14479	6.9 8.04 (rounded to 8)
Churchfield Surgery	1.7 miles	8	13,511 12876	6.9 7.15 (rounded to 7)
Stoke Prior Surgery	2.7 miles	9 10	8,810 8858	7.5 4.92 (rounded to 5)
Catsfield Village Surgery	3.0 miles	4 5	5,098 5380	2.8 (rounded to 3)
Wychbold Surgery	4.0 miles	12	12,374 14479	6.8 8.04 (rounded to 8)
The Surgery, Hemming way	4.7 miles	4 3	3,341 3540	1.9 (rounded to 2)
Barnt Green Surgery	5.9 miles	5	6,678 6800	3.7 (rounded to 4)
The Glebeland Surgery	6.0 miles	2	4,439 4914	2.73 (rounded to 3)
The Corbett Medical Practice	6.3 miles	10	12,258 13176	6.8 7.32 (rounded to 7)
Salters Medical Practice	6.4 miles	8	9,476 8901	5.26 4.94 (rounded to 5)
The Spa Medical Practice	6.4 miles	8	8,937 9914	5.0 5.50 (rounded to 5)

Dental Surgeries

16.3.15 **Table 16.9 List of Dental Surgeries within 7 miles of the Assessment Site** has been updated to reflect the most up to date changes to to the local dental surgery provision.

Table 16.9 – List of Dental Surgeries within 7 miles of the Assessment Site

Dental Surgery	Distance from the Assessment Site	Accepting New NHS Patients	Accepting New Private Patients
Quality Orthodontics	1.2 miles	No	Yes
Mr G D Stokes & J C Williams & Associates	1.4 miles	No	No
College Road Dental Practice	1.5 miles	No	No
Parkside Dental Practice	1.7 miles	Yes	No
LHDP Lansdown DP	1.7 miles	Yes	No
New Road Dental Practice	1.8 miles	Yes No	Yes
Damani Dental Surgery	1.9 miles	Yes No	Yes No
Catshill Dental Surgery	2.9 miles	Yes No	Yes
Fairfield Dental Surgery	2.9 miles	No Yes	No
Barnt Green Dental	2.9miles	Yes	No
Mr A M Williams & Associates	5.7 miles	Yes	Yes
Eachway Dental Practice	5.8 miles	Yes No	Yes
Mr E M Rowley	6.0 miles	Yes	Yes
Greenwood Dental Practice	6.3 miles	No	No
Mr C Leung	6.4 miles	Yes	Yes
Mr Moodley Webheath Dental	6.4 miles	Yes	Yes

Source: NHS Choices Website, accessed May 2020

16.4 Impacts

During Construction

16.4.1 No change

Post Construction

16.4.2 No change

Table 16.10 – Indicative Housing Mix – no change

16.4.3 Effect on job creation – no change

Table 16.11 – Retail Employment Densities – no change

16.4.4 Effect on education – no change

16.4.5 Effect on Open space – no change

16.4.6 Effect on health provision – no change -

16.5 Mitigation and Monitoring

During Construction

16.5.1 No change

Post Construction

16.5.2 No change

16.6 Residual Impacts

During Construction

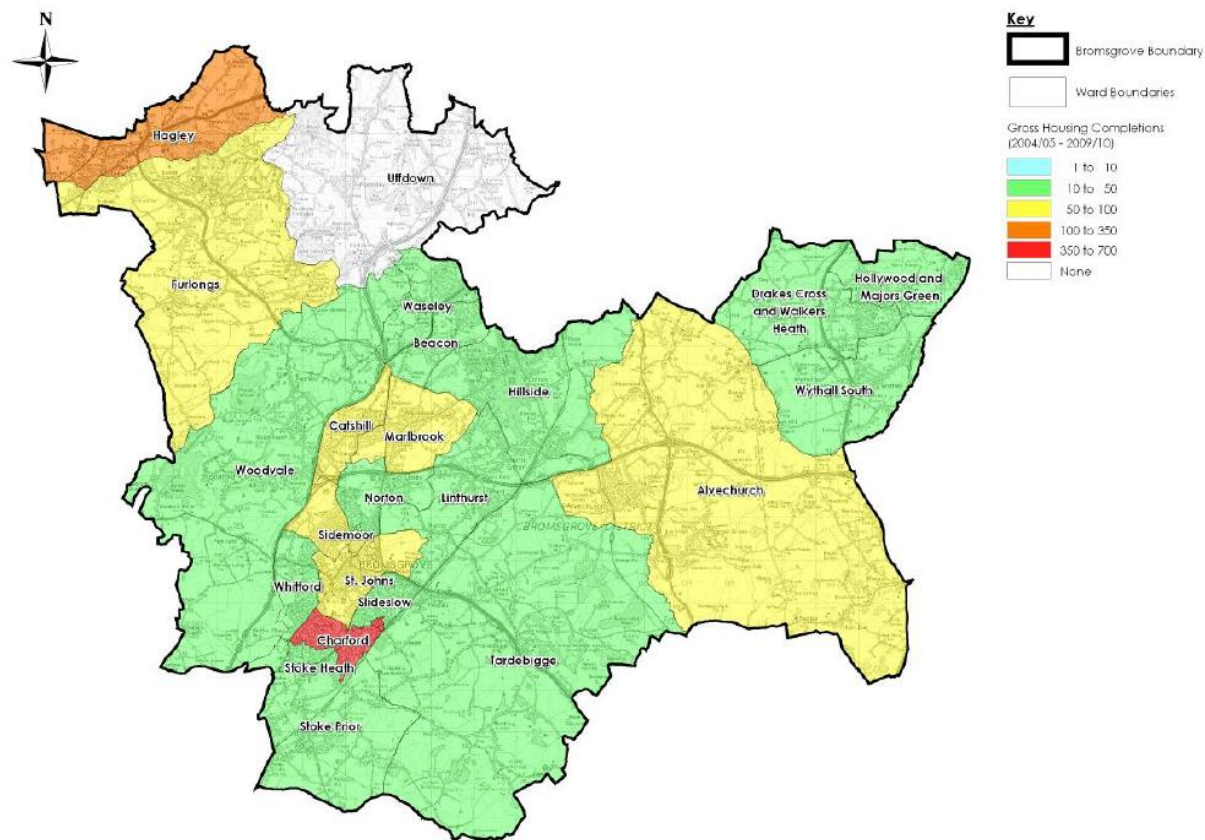
16.6.1 No change

Post Construction

16.6.2 No change.

16.7 Conclusion - no change

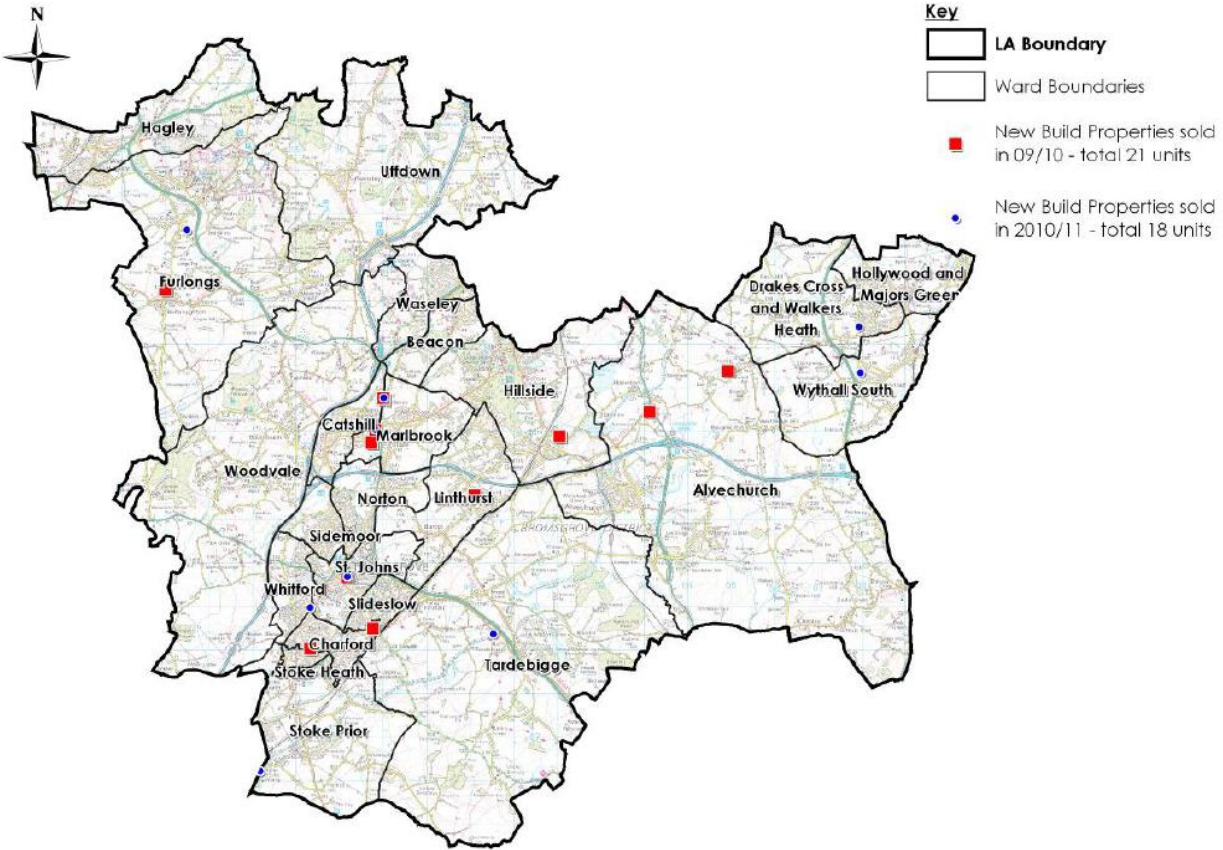
Figure 16.1 – Completions at a Ward Level 2004 to 2010



Source:

Figure 16.2 – New and

Worcestershire Strategic Housing Market Assessment (February 2013) Build Sales 2009/10 2010/11



Source: Worcestershire
Housing
(February

Strategic
Market
Assessment
2013)